

DELHI TRANSCO LTD.

STATE LOAD DISPATCH CENTER

PROGRESS REPORT

AUG - 2018

| S. No. | CONTENTS | Page No. |
|---------------|--|-----------------|
| 1. | Salient Features of Delhi Power System | 3 |
| 2. | Performance of Generating Stations within Delhi | 4 |
| 3. | Details of Outage of Generating Stations within Delhi | 5-14 |
| 4. | Allocation of Power to Delhi from unallocated quota of central sector | 15 |
| 5. | Allocation of Power to Discoms | 16 |
| 6. | Power Availability Demand Position of Delhi at the time of occurrence of Peak Demand | 17 |
| 7. | Power Availability Demand Position of Delhi at the time of occurrence of Maximum Un-Restricted Demand | 18 |
| 8. | Source wise scheduled drawl from grid and Availability within Delhi | 19-22 |
| 9. | Shedding Details | 23-27 |
| 10. | Load Curve for the Day of Peak Demand | 28 |
| 11. | Load Curve for the day of occurrence of Maximum Un-Restricted Demand | 29 |
| 12. | Load Curve for the day of Maximum Energy Consumed | 30 |
| 13. | Load Curve for the day of Maximum Un-Restricted Energy Demand | 31 |
| 14. | Load Duration Curve | 32 |
| 15. | Frequency Analysis | 33 |
| 16. | Voltage Profile for significant 220kV Sub-Stations | 34 |
| 17. | Voltage Profile for significant 400kV Sub-Stations | 35-36 |
| 18. | Tripping Details of 400/220 KV System in Delhi Power System | 37-39 |
| 19. | Details of Under frequency Relay operations in Delhi Power System | 40 |

1 **SALIENT FEATURES OF DELHI POWER SYSTEM**

| Sr. No. | Features | AUG 2017 | AUG 2018 |
|---------|--|-----------------|-----------------|
| 1 | Effective Generation Capacity within Delhi in MW | | |
| | Rajghat Power House | 135 | 135 |
| | Gas Turbine | 270 | 270 |
| | Pragati Power Corporation Ltd. | 330 | 330 |
| | Badapur Thermal Power Station | 705 | 705 |
| | Rithala GT | 108 | 108 |
| | Bawana | 1372 | 1372 |
| | TOWMCL | 16 | 16 |
| | Total | 2936 | 2936 |
| 2 | Maximum Unrestricted Demand (MW) | 6133 | 5937 |
| | Date | 18.08.17 | 17.08.18 |
| | Time | 22.50.57 | 22.46.00 |
| 3 | Peak Demand met (MW) | 6129 | 5937 |
| | Date | 18.08.17 | 17.08.18 |
| | Time | 22.50.57 | 22.46.00 |
| 4 | Peak Availability (MW) | 6126 | 5973 |
| 5 | Shortage (-) / Surplus (+) in MW | (-) 3 | (+) 36 |
| 6 | Percentage Shortage (-) / Surplus (+) | (-) 0.05 | (+) 0.61 |
| 7 | Maximum Energy Consume in a day (Mus) | 126.820 | 125.273 |
| 8 | Energy Consumed during the month | 3471.663 | 3532.162 |
| 9 | Load Shedding in Mus | | |
| A) | Due to Grid Restrictions | | |
| i) | Under Frequency Relay Operations | 0.000 | 0.000 |
| ii) | Manual Load shedding from DTL S/Stns. | 0.000 | 0.000 |
| iii) | Load Shedding due to low frequency / Low Voltage / TTC/ATC Violation | | |
| | NDPL | 0.000 | 0.000 |
| | BRPL | 0.003 | 0.000 |
| | BYPL | 0.000 | 0.000 |
| | NDMC | 0.000 | 0.000 |
| | MES | 0.000 | 0.000 |
| iv) | Due to transmission Constraints in Central Sector | 0.000 | 0.000 |
| | Total due to Grid Restriction | 0.003 | 0.000 |
| B) | Due to Constraints in System in Mus | | |
| | DTL | 0.904 | 0.337 |
| | NDPL | 0.086 | 0.178 |
| | BRPL | 1.258 | 1.353 |
| | BYPL | 0.151 | 0.049 |
| | NDMC | 0.000 | 0.000 |
| | MES | 0.000 | 0.000 |
| | Other Agencies | 0.000 | 0.021 |
| | Total | 2.399 | 1.938 |
| 11 | Grand Total in Mus | 2.402 | 1.938 |

2. PERFORMANCE OF GENERATING STATIONS WITHIN DELHI DURING AUG 2018

A) For the month of Aug 2018

All Figures in MUs

| S. No | Stations | Gross Generation | Aux. Consumption | Net Generation | Availability (%) | Backing Down |
|-------|--------------|------------------|------------------|----------------|------------------|--------------|
| 1. | RPH | 0.000 | 0.245 | -0.245 | 0.00 | 0.00 |
| 2. | GT | 60.848 | 1.909 | 58.939 | 79.66 | 96.163 |
| 3. | PPCL | 113.605 | 2.793 | 110.812 | 68.31 | 52.205 |
| 4. | BTPS | 242.249 | 23.05 | 219.559 | 59.50 | 33.275 |
| 5. | Rithala | 0.000 | 0.062 | -0.062 | 0.00 | 0.00 |
| 6. | Bawana | 255.364 | 10.165 | 245.199 | 77.49 | 525.754 |
| 7. | Towmcl | 15.064 | 2.334 | 12.730 | -- | -- |
| 8. | EDWPCL | 2.351 | 0.839 | 1.512 | -- | -- |
| 9. | DMSWL | 11.582 | 2.099 | 9.483 | -- | -- |
| | TOTAL | 701.063 | 43.496 | 657.927 | -- | -- |

B) For the Year 2018-19 (Upto Aug 2018)

| Power Station | Effective Capacity (MW) | Net Generation in MUs for Aug 2018 | Availability (%) for Aug 2018 | PLF (%) for Aug 2018 | Cumulative Generation in MUs upto Aug 2018 for the year 2018-19 | Cumulative Availability in % upto Aug 2018 for the year 2018-19 | Cumulative PLF in % upto Aug 2018 for the year 2018-19 |
|---------------|-------------------------|------------------------------------|-------------------------------|----------------------|---|---|--|
| RPH | 135 | -0.245 | 0.00 | 0.00 | -1.163 | 0.00 | 0.00 |
| GT | 270 | 58.939 | 79.66 | 30.31 | 332.415 | 74.04 | 34.70 |
| PPCL | 330 | 110.812 | 68.31 | 46.39 | 810.343 | 82.76 | 68.76 |
| BTPS | 705 | 219.559 | 59.50 | 46.78 | 948.156 | 60.14 | 40.84 |
| Rithala | 108 | -0.062 | 0.00 | 0.00 | -0.306 | 0.00 | 0.00 |
| Bawana | 1372 | 245.199 | 77.49 | 25.45 | 1475.162 | 65.28 | 30.66 |
| Towmcl | 16 | 12.730 | -- | -- | 59.109 | -- | -- |
| EDWPCL | -- | 1.512 | -- | -- | 8.801 | -- | -- |
| DMSWL | -- | 9.483 | -- | -- | 50.211 | -- | -- |
| TOTAL | 2936 | 657.927 | -- | -- | 3682.728 | -- | -- |

3 DETAILS OF OUTAGES OF GENERATING STNS. WITHIN DELHI W.E.F. APRIL 2018

RPH

| Unit No | Capacity in MW | Outage | | Synchronization | | Reason of Outage |
|---------|----------------|----------|-------|-----------------|------|--|
| | | Date | Time | Date | Time | |
| 1 | 67.5 | 08.05.15 | 13.40 | Contd. | | Not in operation due to not meeting pollution norms. |

| Unit No | Capacity in MW | Outage | | Synchronization | | Reason of Outage |
|---------|----------------|----------|-------|-----------------|------|--|
| | | Date | Time | Date | Time | |
| 2 | 67.5 | 21.05.15 | 10.20 | Contd. | | Not in operation due to not meeting pollution norms. |

(B) Gas Turbine

| Unit No | Capacity in MW | Outage | | Synchronization | | Reason of Outage |
|---------|----------------|---------|-------|-----------------|-------|---|
| | | Date | Time | Date | Time | |
| 1 | 30 | 1.4.18 | 00:00 | 4.4.18 | 06:44 | Machine stopped as per SLDC message due to low demand on CCNG |
| | | 17.4.18 | 00:45 | 17.4.18 | 13:25 | Machine tripped on Heavy jerk from the system and came on FSNL |
| | | 8.5.18 | 12:33 | 19.5.18 | 19:27 | Machine stopped due to changeover to GT#5.and not started due to no demand from SLDC. |
| | | 23.5.18 | 08:24 | 23.5.18 | 15:02 | Machine tripped on CRT got blank. |
| | | 26.5.18 | 12:23 | 27.5.18 | 19:25 | Machine tripped on heavy jerk and there was a CW line leakage.The PTW cancelled on 27.05.2018 at 19:25. |
| | | 27.5.18 | 19:25 | 29.5.18 | 19:47 | Machine could not be taken on bar due to no schedule from SLDC on CCNG |
| | | 2.6.18 | 09:20 | 4.6.18 | 19:37 | Machine stopped as per SLDC as no schedule on CCNG |
| | | 30.6.18 | 08:14 | 30.6.18 | 08:35 | Machine came on FSNL due to tripping of 160 MVA Transformer due to grid disturbance. |
| | | 3.7.18 | 21:07 | 4.7.18 | 23:12 | Machine stopped as per SLDC message due to low demand on CCNG. |
| | | 5.7.18 | 15:50 | 5.7.18 | 17:30 | Machine tripped on electrical fuse failure. Electrical trouble normal shutdown. |
| | | 29.7.18 | 00:04 | 30.7.18 | 11:12 | Machine stopped as per SLDC message due to low demand on CCNG. |
| | | 30.7.18 | 20:10 | 31.08.18 | 23:59 | Machine stopped due to heavy smoke below turbine. |

| Unit No | Capacity in MW | Outage | | Synchronization | | Reason of Outage |
|----------|----------------|----------|-------|-----------------|-------|---|
| | | Date | Time | Date | Time | |
| 2 | 30 | 17.4.18 | 00:45 | 17.4.18 | 03:40 | Machine tripped on Heavy jerk from the system and came on FSNL |
| | | 18.4.18 | 05:40 | 18.4.18 | 07:49 | Machine tripped on Exhaust Temperature High |
| | | 13.5.18 | 19:45 | 13.5.18 | 20:20 | Machine came on FSNL due to jerk in system. |
| | | 16.5.18 | 03:18 | 16.5.18 | 04:00 | Machine tripped on lub oil temp high. |
| | | 26.5.18 | 08:05 | 27.5.18 | 19:25 | Machine tripped on TAD High. Later machine cleared and continued on no load to attend leakage in CW line .PTW cancelled on 27.05.2018 at 19:25 hrs. |
| | | 27.5.18 | 19:25 | 29.5.18 | 21:17 | Machine could not be taken on bar due to no schedule from SLDC on CCNG |
| | | 2.6.18 | 09:15 | 4.6.18 | 11:35 | Machine stopped as per SLDC as no schedule on CCNG |
| | | 26.6.18 | 23:23 | 27.6.18 | 00:10 | Machine tripped on T communication link inoperative. |
| | | 27.6.18 | 12:46 | 27.6.18 | 18:00 | Machine stopped to replace faulty transformer by C&I div. |
| | | 30.6.18 | 07:40 | 30.6.18 | 12:46 | Machine stopped as per SLDC as no schedule on CCNG |
| | | 3.7.18 | 21:10 | 5.7.18 | 06:48 | Machine stopped as per SLDC message due to low demand on CCNG. |
| | | 30.7.18 | 23:32 | 20.08.18 | 11:42 | |
| 23.08.18 | 11:00 | 31.08.18 | 23:59 | | | |

| Unit No | Capacity in MW | Outage | | Synchronization | | Reason of Outage |
|---------|----------------|---------|-------|--|-------|--|
| | | Date | Time | Date | Time | |
| 3 | 30 | 1.4.18 | 00:00 | 4.4.18 | 07:20 | Machine stopped as per SLDC message due to low demand on CCSpot |
| | | 9.4.18 | 13:45 | 13.4.18 | 13:32 | Machine stopped as per SLDC message due to low demand on CCSpot. Started for Testing Black Start |
| | | 13.4.18 | 14:40 | 15.4.18 | 17:05 | Machine stopped as per SLDC message due to low demand on CCSpot. Started for Trial RUN |
| | | 15.4.18 | 17:10 | 16.4.18 | 02:18 | Machine stopped as per SLDC message due to low demand on CCSpot |
| | | 24.4.18 | 11:00 | 27.4.18 | 18:50 | Machine stopped as per SLDC message due to low demand on CCSpot |
| | | 29.4.18 | 00:03 | 12.05.18 | 00:20 | Machine stopped as per SLDC message due to low demand on CCSpot |
| | | 13.5.18 | 19:45 | 13.5.18 | 21:04 | Machine came on FSNL due to jerk in system. |
| | | 14.5.18 | 00:00 | 21.5.18 | 21:50 | Machine could not be taken on bar due to no schedule from SLDC on CCNG |
| | | 23.5.18 | 16:08 | 24.5.18 | 00:17 | Machine could not be taken on bar due to no schedule from SLDC on CCNG |
| | | 26.5.18 | 16:35 | 27.5.18 | 19:25 | Machine stopped to attend CW line leakage.The PTW cancelled on 27.05.2018 at 19:25. |
| | | 27.5.18 | 19:25 | 29.5.18 | 12:55 | Machine could not be taken on bar due to no schedule from SLDC on CCNG |
| | | 29.5.18 | 20:22 | 04.06.18 | 11.54 | Machine could not be taken on bar due to no schedule from SLDC on CCNG |
| | | 4.6.18 | 13:06 | 4.6.18 | 15:00 | Machine tripped on Exhaust temp high and machine cleared at 15:00 hrs.. |
| | | 4.6.18 | 15:00 | 20.6.18 | 12:45 | Machine not started after clearance due to low schedule from SLDC. |
| | | 28.6.18 | 00:01 | 28.6.18 | 13:06 | Machine stopped as per the message of SLDC |
| | | 30.6.18 | 08:14 | 30.6.18 | 08:30 | Machine came on FSNL due to tripping of 160 MVA Transformer due to grid disturbance. |
| | | 30.6.18 | 10:02 | 30.6.18 | 10:40 | Machine tripped on Battery undervoltage |
| | | 30.6.18 | 13:30 | 30.6.18 | 23:59 | Machine stopped as per the message of SLDC |
| | | 9.7.18 | 18:30 | 9.7.18 | 22:09 | Machine stopped as per SLDC message due to low demand on CCNG. |
| | | 12.7.18 | 00:02 | 13.7.18 | 10:15 | Machine stopped as per SLDC message due to low demand on CCNG. |
| | | 13.7.18 | 15:30 | 16.7.18 | 09:56 | Machine stopped as per SLDC message due to low demand on CCNG. |
| | | 18.7.18 | 01:44 | 18.7.18 | 12:09 | Machine stopped due to tripping of STG-II and due to non availability of STG-II.vaiable |
| | | 18.7.18 | 14:17 | 20.7.18 | 09:40 | Machine stopped as no demend from SLDC/ |
| 20.7.18 | 18:45 | 21.7.18 | 11:30 | Machine stopped as per SLDC message due to low demand on CCNG. | | |
| 21.7.18 | 16:54 | 24.7.18 | 11:16 | Machine stopped as per SLDC message due to low demand on CCNG. | | |
| 25.7.18 | 17:40 | 31.8.18 | 23:59 | Machine stopped as per SLDC message due to low demand on CCNG. | | |

| Unit No | Capacity in MW | Outage | | Synchronization | | Reason of Outage |
|---------|----------------|---------|-------|---|-------|---|
| | | Date | Time | Date | Time | |
| 4 | 30 | 1.4.18 | 00:00 | 4.4.18 | 10:05 | Machine stopped as per SLDC message due to low demand on OCSpot |
| | | 6.4.18 | 07:40 | 6.4.18 | 16:31 | Machine tripped on Electrical trouble normal shutdown |
| | | 6.4.18 | 17:15 | 15.4.18 | 07:34 | Machine stopped as per SLDC message due to low demand on CCSpot |
| | | 15.4.18 | 23:29 | 19.4.18 | 13:04 | Machine tripped on Communication failed with IO Pack. The machine not started due to low schedule from SLDC |
| | | 20.4.18 | 08:58 | 30.4.18 | 23:59 | Machine stopped as per SLDC message due to low demand on CCSpot |
| | | 1.5.18 | 00:00 | 12.5.18 | 21:06 | Machine could not be taken on bar due to no schedule from SLDC on CCNG |
| | | 13.5.18 | 18:00 | 23.5.18 | 09:13 | Machine could not be taken on bar due to no schedule from SLDC on CCNG |
| | | 23.5.18 | 11:50 | 24.5.18 | 12:47 | Machine stopped as load could not be increased above 20 MW. |
| | | 24.5.18 | 12:47 | 26.5.18 | 08:44 | Machine stopped as per SLDC message due to low demand |
| | | 26.5.18 | 12:23 | 26.5.18 | 14:25 | Machine tripped due to jerk in system and later taken to attend leakage in CW line.. |
| | | 26.5.18 | 16:32 | 27.5.18 | 19:25 | Machine stopped to attend CW line leakage. |
| | | 27.5.18 | 19:25 | 28.5.18 | 12:18 | Machine started after attend of CW line leakage |
| | | 28.5.18 | 14:51 | 29.5.18 | 12:21 | Machine stopped as no schedule from SLDC . |
| | | 29.5.18 | 19:52 | 4.6.18 | 14:50 | Machine stopped as no schedule from SLDC . |
| | | 4.6.18 | 20:10 | 20.6.18 | 22:06 | Machine stopped as per SLDC as no schedule on CCNG |
| | | 28.6.18 | 00:03 | 28.6.18 | 13:01 | Machine stopped as per the message of SLDC |
| | | 30.6.18 | 08:14 | 30.6.18 | 08:46 | Machine came on FSNL due to grid disturbance. |
| | | 30.6.18 | 16:15 | 09.07.18 | 13:20 | Machine stopped as per SLDC as no schedule on CCNG |
| | | 9.7.18 | 18:20 | 9.7.18 | 21:52 | Machine stopped as per SLDC message due to low demand on CCNG. |
| | | 10.7.18 | 02:13 | 10.7.18 | 13:40 | Machine stopped as per SLDC message due to low demand on CCNG. |
| 12.7.18 | 00:02 | 12.7.18 | 13:55 | Machine stopped as per SLDC message due to low demand on CCNG. | | |
| 14.7.18 | 04:36 | 14.7.18 | 07:29 | Machine tripped on control trip and overtemperature trip alarm on CRT | | |
| 14.7.18 | 07:29 | 20.7.18 | 09:45 | Machine not taken on load due to no schedule from SLDC | | |
| 20.7.18 | 18:46 | 31.8.18 | 23:59 | Machine stopped as per SLDC message due to low demand on CCNG. | | |

| Unit No | Capacity in MW | Outage | | Synchronization | | Reason of Outage |
|----------|----------------|----------|-------|-----------------|-------|---|
| | | Date | Time | Date | Time | |
| 5 | 30 | 1.4.18 | 00:00 | 29.4.18 | 10:01 | Machine stopped as per SLDC message due to low demand on CCSpot |
| | | 29.4.18 | 13:45 | 29.4.18 | 18:10 | Trial run |
| | | 29.4.18 | 22:14 | 9.5.18 | 12:19 | Machine stopped as per SLDC message due to low demand on CCSpot |
| | | 12.5.18 | 17:25 | 13.5.18 | 13:03 | Machine tripped on overspeed bolt trip alarm appeared. |
| | | 13.5.18 | 18:00 | 23.5.18 | 10:40 | Machine stopped as per SLDC message due to low demand |
| | | 23.5.18 | 23:08 | 25.5.18 | 16:03 | Machine tripped on Exhaust overtemperature. |
| | | 26.5.18 | 12:23 | 26.5.18 | 16:35 | Machine tripped on heavy jerk and there was a CW line leakage. |
| | | 26.5.18 | 16:35 | 27.5.18 | 19:25 | Machine stopped to attend CW line leakage. |
| | | 27.5.18 | 19:25 | 28.5.18 | 13:33 | Machine started after CW line leakage attended. |
| | | 2.6.18 | 12:25 | 2.6.18 | 20:30 | Machine stopped to attend hotspot in HV bushing of STG-III Transformer.Machine made available at 20:30 hrs. |
| | | 2.6.18 | 20:30 | 4.6.18 | 09:16 | Machine stopped as per SLDC as no schedule on CCNG |
| | | 10.6.18 | 08:02 | 11.6.18 | 10:50 | Machine stopped as per SLDC as no schedule on CCNG |
| | | 17.6.18 | 11:00 | 1.7.18 | 22:30 | Machine stopped as per SLDC as no schedule on CCNG |
| | | 2.7.18 | 03:32 | 3.7.18 | 21:04 | Machine stopped as per SLDC message due to low demand on CCNG. |
| | | 5.7.18 | 02:30 | 9.7.18 | 22:49 | Machine stopped as per SLDC message due to low demand on CCNG.Machine started in open cycle mode as per the system. |
| | | 10.7.18 | 02:13 | 10.7.18 | 10:15 | Machine stopped as per SLDC message due to low demand on CCNG. |
| | | 12.7.18 | 14:01 | 18.7.18 | 12:58 | Machine stopped as per SLDC message due to low demand on CCNG. |
| | | 20.7.18 | 17:45 | 20.7.18 | 17:57 | Machine desynchronized and put on FSNL due to passing of trailer. |
| | | 21.7.18 | 00:02 | 25.7.18 | 16:33 | Machine stopped as per SLDC message due to low demand on CCNG. |
| | | 26.7.18 | 10:15 | 30.7.18 | 20:30 | Machine stopped as per SLDC message due to low demand on CCNG. |
| 28.08.18 | 16:19 | 28.08.18 | 20:07 | | | |

| Unit No | Capacity in MW | Outage | | Synchronization | | Reason of Outage |
|---------|----------------|---------|-------|--|-------|---|
| | | Date | Time | Date | Time | |
| 6 | 30 | 1.4.18 | 00:00 | 23.05.18 | 18:13 | Machine under Major Inspection and out of DC |
| | | 23.5.18 | 18:30 | 24.5.18 | 15:14 | Machine tripped on Generator journal bearing drain oil temp High and lub oil header temp alos high. |
| | | 26.5.18 | 16:35 | 27.5.18 | 19:25 | Machine stopped to attend CW line leakage.The PTW cancelled on 27.05.2018 at 19:25. |
| | | 27.5.18 | 19:25 | 28.5.18 | 11:21 | Machine started after CW line leakage attended. |
| | | 30.5.18 | 11:20 | 30.5.18 | 12:42 | Machine tripped on Exhaust temperature high. |
| | | 2.6.18 | 12:30 | 2.6.18 | 18:10 | Machine stopped to attend hotspot in HV bushing of STG-III Transformer. |
| | | 10.6.18 | 08:03 | 10.6.18 | 20:05 | Machine stopped to attend problem in Governing system of STG. The machine made available at 20.05 hrs. and not taken on load due to low schedule from SLDC. |
| | | 10.6.18 | 20:05 | 11.6.18 | 10:58 | Machine not started as per SLDC as no schedule on CCNG |
| | | 17.6.18 | 11:00 | 20.6.18 | 13:46 | Machine stopped as per SLDC as no schedule on CCNG |
| | | 20.6.18 | 19:00 | 1.7.18 | 20:55 | Machine stopped as per SLDC as no schedule on CCNG |
| | | 2.7.18 | 03:23 | 3.7.18 | 20:56 | Machine stopped as per SLDC message due to low demand on CCNG. |
| | | 5.7.18 | 18:05 | 5.7.18 | 19:35 | Machine tripped on communication IO Pack failure. Machine started upto FSNL and cleared at 19:35 hrs. |
| | | 5.7.18 | 19:35 | 8.7.18 | 22:57 | Machine not taken on load due to no schedule from SLDC and later started on open cycle mode as per system demand.. |
| | | 13.7.18 | 16:00 | 18.7.18 | 01:35 | Machine stopped as per SLDC message due to low demand on CCNG. |
| | | 20.7.18 | 17:45 | 20.7.18 | 17:56 | Machine desynchronized and put on FSNL due to passing of trailer. |
| | | 21.7.18 | 00:02 | 23.7.18 | 10:44 | Machine stopped as per SLDC message due to low demand on CCNG. |
| 26.7.18 | 10:15 | 30.7.18 | 13:08 | Machine stopped as per SLDC message due to low demand on CCNG. | | |

| Unit No | Capacity in MW | Outage | | Synchronization | | Reason of Outage |
|----------|----------------|----------|-------|---|-------|---|
| | | Date | Time | Date | Time | |
| STG -1 | 30 | 17.4.18 | 00:45 | 17.4.18 | 15:14 | Machine tripped on Heavy jerk from the system |
| | | 26.4.18 | 16:52 | 26.4.18 | 18:44 | Machine tripped due to tripping of 2 MVA Transformer-1 |
| | | 1.5.18 | 00:28 | 1.5.18 | 02:16 | Machine tripped due to tripping of 2 MVA Transformer. |
| | | 8.5.18 | 12:34 | 8.5.18 | 13:25 | Tripped while slashing HRSG-1 |
| | | 8.5.18 | 14:56 | 8.5.18 | 15:54 | Tripped on class -A relay operated. |
| | | 13.5.18 | 19:45 | 13.5.18 | 21:41 | Machine tripped due to jerk in system. |
| | | 16.5.18 | 03:02 | 16.5.18 | 04:52 | Machine tripped due to jerk in system |
| | | 16.5.18 | 12:34 | 16.5.18 | 13:21 | Machine tripped on Turbine speed very high I,e malfunctioning of output card of turbine. |
| | | 26.5.18 | 16:35 | 27.5.18 | 19:25 | Machine stopped to attend CW line leakage.The PTW cancelled on 27.05.2018 at 19:25. |
| | | 27.5.18 | 19:25 | 30.5.18 | 01:16 | Machine could not be taken on bar due to no schedule from SLDC |
| | | 2.6.18 | 09:23 | 4.6.18 | 13:44 | Machine stopped as per SLDC as no schedule |
| | | 26.6.18 | 23:30 | 27.6.18 | 00:40 | Machine tripped on Exhaust temp high |
| | | 30.6.18 | 07:34 | 30.6.18 | 18:40 | Machine tripped on Heavy jerk in the system and delay in synchronizing due to vibration problem in front and rear bearing AND EJECTOR FLANGE DAMAGED IN JERK.. |
| | | 3.7.18 | 16:40 | 4.7.18 | 21:15 | Machine tripped on Heavy jerk due to system and due to jerk in system there was leakage in Ejectir flange. And machen was made ready on 04.07.2018 at 20:34 hrs.. |
| | | 4.7.18 | 21:15 | 5.7.18 | 02:05 | Machine was not started due to low demand from SLDC.. |
| | | 28.7.18 | 13:36 | 28.7.18 | 17:50 | Machine tripped due to jerk in the system and leading to outage of 160 MVA Transformer 1 & 2 both. |
| | | 30.7.18 | 23:32 | 20.08.18 | 15:40 | Machine was not started due to low demand from SLDC.. |
| | | 20.08.18 | 16:05 | 20.08.18 | 22:45 | Unit tripped on high viberation in bearing. |
| 23.08.18 | 11:00 | 31.08.18 | 23:59 | Machine stopped as per SLDC message due to low demand | | |

| Unit No | Capacity in MW | Outage | | Synchronization | | Reason of Outage |
|-----------|----------------|---------|-------|--|-------|---|
| | | Date | Time | Date | Time | |
| STG -2 | 30 | 1.4.18 | 00:00 | 4.4.18 | 14:08 | Machine stopped as per SLDC message due to low demand on CCSpot |
| | | 7.4.18 | 11:35 | 7.4.18 | 12:08 | Machine tripped suddenly on control valve closing |
| | | 9.4.18 | 13:45 | 15.4.18 | 09:43 | Machine stopped as per SLDC message due to low demand on CCSpot |
| | | 17.4.18 | 01:20 | 17.4.18 | 04:58 | Machine tripped on all the parameters showing on blue band . |
| | | 18.4.18 | 08:01 | 18.4.18 | 08:35 | Machine tripped on Turbine channel 1&2 operated alarm appeared. |
| | | 18.4.18 | 10:48 | 18.4.18 | 11:38 | Machine tripped on hunting started of parameters on BCD. |
| | | 24.4.18 | 11:00 | 24.4.18 | 12:15 | Machine stopped to attend oil leakage from servo motor line |
| | | 24.4.18 | 12:15 | 27.4.18 | 21:00 | Machine cleared but not started due to no schedule from SLDC |
| | | 29.4.18 | 00:03 | 30.4.18 | 23:59 | Machine stopped as per SLDC message due to low demand on CCSpot |
| | | 17.4.18 | 01:20 | 17.4.18 | 03:58 | Machine tripped on all the parameters showing on blue band . |
| | | 1.5.18 | 00:00 | 12.5.18 | 03:58 | Machine could not be taken on bar due to no schedule from SLDC |
| | | 13.5.18 | 19:45 | 13.5.18 | 20:30 | Machine tripped on jerk in system.But later was not started due to low schedule from SLDC |
| | | 13.5.18 | 20:30 | 21.5.18 | 23:49 | Machine could not be taken on bar due to no schedule from SLDC |
| | | 26.5.18 | 16:35 | 27.5.18 | 19:25 | Machine stopped to attend CW line leakage.The PTW cancelled on 27.05.2018 at 19:25. |
| | | 27.5.18 | 19:25 | 29.5.18 | 14:33 | Machine could not be taken on bar due to no schedule from SLDC |
| | | 29.5.18 | 18:40 | 04.06.18 | 16:08 | Machine stopped to attend water leakage from inlet line of Generator cooler. |
| | | 4.6.18 | 20:13 | 20.6.18 | 15:30 | Machine stopped as per SLDC as no schedule |
| | | 28.6.18 | 00:03 | 28.6.18 | 15:40 | Machine stopped as per the message of SLDC |
| | | 30.6.18 | 08:14 | 30.6.18 | 13:30 | Machine tripped due to tripping of 160 MVA transformer as there was disturbance in the grid. |
| | | 30.6.18 | 13:30 | 12.07.18 | 16:30 | Machine could not be taken on bar due to Axial shift and taken out of DC. |
| | | 14.7.18 | 04:36 | 16.7.18 | 14:30 | Machine tripped due to tripping of GT-4 and later not started due to no schedule from SLDC. |
| | | 17.7.18 | 00:55 | 17.7.18 | 01:38 | Machine tripped on Class A trip alarm, Reverse power trip alarm, Power relay and protection SSVT fuse fail. |
| | | 17.7.18 | 18:06 | 17.7.18 | 21:35 | Machine tripped on Ch-I & CH-II and class A relay trip alarm appeared on CRT. |
| 17.7.18 | 21:49 | 21.7.18 | 16:20 | Machine again tripped on CH-I & CH-II and Gen RJB and FJB Vibration very high and not started due to no demand.. | | |
| 25.7.18 | 17:40 | 31.8.18 | 23:59 | Machine stopped as per SLDC message due to low demand on CCNG. | | |

| Unit No | Capacity in MW | Outage | | Synchronization | | Reason of Outage |
|----------|----------------|----------|-------|--|-------|---|
| | | Date | Time | Date | Time | |
| STG -3 | 30 | 1.4.18 | 00:00 | 08.05.18 | 14.18 | Machine under O/H |
| | | 8.5.18 | 14:28 | 8.5.18 | 15:52 | Tripped on class -A relay operated. |
| | | 11.5.18 | 15:54 | 12.5.18 | 13:50 | Machine tripped on calibration of woodward governor.Is under maintenance and STG-II taken on 12.05.2018 at 13:50 made available. |
| | | 12.5.18 | 13:50 | 23.5.18 | 13:30 | Machine could not be taken on bar due to no schedule from SLDC |
| | | 23.5.18 | 23:08 | 24.5.18 | 19:23 | Machine tripped on tripping of GT-5 & 6 |
| | | 26.5.18 | 16:35 | 27.5.18 | 19:25 | Machine stopped to attend CW line leakage.The PTW cancelled on 27.05.2018 at 19:25. |
| | | 27.5.18 | 19:25 | 28.5.18 | 14:18 | Machine started after attend CW line leakage. |
| | | 28.5.18 | 17:46 | 28.5.18 | 18:13 | Machine tripped on low vacuum. |
| | | 1.6.18 | 08:15 | 1.6.18 | 11:06 | Machine stopped to attend oil leakage in governor system. |
| | | 2.6.18 | 12:32 | 2.6.18 | 19:48 | Machine stopped to attend hotspot in HV bushing of STG-III Transformer. |
| | | 9.6.18 | 11:30 | 9.6.18 | 12:50 | Machine stopped to attend problem in Governing system of STG. |
| | | 10.6.18 | 03:52 | 10.6.18 | 04:24 | Machine stopped to attend problem in Governing system of STG. |
| | | 10.6.18 | 08:03 | 10.6.18 | 20:05 | Machine again stopped to attend problem in Governing system of STG. The machine made available on 10.06.2018 at 20:05 hrs but not taken on load due to low schedule from SLDC |
| | | 10.6.18 | 20:05 | 11.6.18 | 13:00 | Machine not started due to low schedule from SLDC |
| | | 16.6.18 | 12:25 | 16.6.18 | 16:15 | Machine tripped on FJB vibration very high. |
| | | 17.6.18 | 11:00 | 20.6.18 | 17:45 | Machine stopped as per SLDC as no schedule |
| | | 20.6.18 | 17:45 | 24.6.18 | 16:45 | Machine was out of DC due to problem in MOP and taken in DC on 24.06.2018 at 16:45 hrs. The machine not taken on load due to low schedule from SLDC. |
| | | 24.6.18 | 16:45 | 30.6.18 | 12:17 | Machine after being taken in DC not taken on load due to no schedule from SLDC |
| | | 30.6.18 | 12:17 | 30.6.18 | 20:00 | Machine not available due to problem in MOP. |
| | | 30.6.18 | 20:00 | 30.6.18 | 23:59 | Machine not taken on bar due to low schedule from SLDC. |
| | | 1.7.18 | 22:56 | 3.7.18 | 22:00 | STG-III out of DC due to unavailability of MOP but made available on 03.07.2018 at 22:00 hrs. |
| | | 4.7.18 | 21:52 | 9.7.18 | 09:39 | Machine out of DC due to oil leakage from MOP and made available by C&I on 09.07.2018 at 09:39 hrs.. |
| | | 9.7.18 | 09:39 | 9.7.18 | 11:32 | Machine after made available started on 9/7/2018 at 11:32 hrs. |
| | | 10.7.18 | 16:20 | 10.7.18 | 17:36 | Machine tripped while increasing load from 11.5 MW to 19.5 MW. |
| | | 13.7.18 | 16:00 | 18.7.18 | 03:44 | Machine was not started due to low demand from SLDC.. |
| | | 20.7.18 | 00:00 | 20.7.18 | 19:51 | Machine desynchronized. |
| | | 21.7.18 | 00:02 | 23.7.18 | 12:40 | Machine was not started due to low demand from SLDC.. |
| 26.7.18 | 10:15 | 30.7.18 | 15:40 | Machine stopped as per SLDC message due to low demand on CCNG. | | |
| 30.7.18 | 17:36 | 30.7.18 | 19:18 | Machine tripped on 99 GT, 32G-2B relay operated. | | |
| 28.08.18 | 16:39 | 28.08.18 | 21:25 | Machine tripped on Bearing vibration high. | | |
| 29.08.18 | 17:25 | 29.08.18 | 18.16 | Machine tripped on GE Protection Main fuse failure and AVR VT fuse failure alarm on backup desk. | | |

(C) PRAGATI

| Unit No | Capacity in MW | Outage | | Synchronization | | Reason of Outage |
|---------|----------------|----------|-------|-----------------|-------|---------------------------------|
| | | Date | Time | Date | Time | |
| 1 | 104 | 01.04.18 | 00.00 | 17.04.18 | 16.49 | Stopped for HGPI |
| | | 03.05.18 | 12.46 | 04.05.18 | 15.07 | Stopped due to low demand. |
| | | 04.05.18 | 16.10 | 11.05.18 | 14.16 | Stopped due to low demand. |
| | | 13.05.18 | 19.50 | 13.05.18 | 20.14 | Tripped due to grid disturbance |
| | | 16.05.18 | 03.01 | 16.05.18 | 04.49 | |
| | | 26.05.18 | 12.24 | 26.05.18 | 13.22 | |
| | | 26.05.18 | 13.56 | 26.05.18 | 14.42 | |
| | | 30.06.18 | 08.17 | 30.06.18 | 12.57 | |
| | | 28.07.18 | 00.10 | 03.08.18 | 12.30 | Stopped due to low demand. |
| | | 06.08.18 | 12.31 | 13.08.18 | 17.20 | |

| Unit No | Capacity in MW | Outage | | Synchronization | | Reason of Outage |
|----------|----------------|----------|-------|----------------------------|-------|---|
| | | Date | Time | Date | Time | |
| 2 | 104 | 17.04.18 | 18.47 | 18.04.18 | 12.45 | Tripped on internal fault. |
| | | 18.04.18 | 12.45 | 19.04.18 | 06.24 | Stopped due to low demand. |
| | | 03.05.18 | 07.19 | 03.05.18 | 09.07 | Tripped due to grid disturbance |
| | | 26.05.18 | 13.56 | 26.05.18 | 14.38 | |
| | | 30.06.18 | 08.17 | 30.06.18 | 09.35 | |
| | | 12.07.18 | 17.16 | 12.07.18 | 18.20 | |
| | | 29.07.18 | 15.50 | 29.07.18 | 17.29 | Tripped on internal fault. |
| | | 13.08.18 | 18.51 | 13.08.18 | 21.15 | Unit stopped for checking of diverter dumper seal |
| | | 13.08.18 | 21.15 | 16.08.18 | 14.30 | Stopped due to low demand. |
| | | 16.08.18 | 14.30 | 30.08.18 | 18.45 | Unit stopped due to repairing of diverter dumper. |
| 30.08.18 | 18.45 | 31.08.18 | 23.59 | Stopped due to low demand. | | |

| Unit No | Capacity in MW | Outage | | Synchronization | | Reason of Outage |
|----------|----------------|----------|-------|-----------------|-------|----------------------------------|
| | | Date | Time | Date | Time | |
| STG | 122 | 20.04.18 | 15.01 | 20.04.18 | 16.43 | Tripped on internal fault. |
| | | 03.05.18 | 07.19 | 03.05.18 | 09.00 | Tripped due to grid disturbance |
| | | 03.05.18 | 09.00 | 03.05.18 | 10.48 | Internal problem |
| | | 03.05.18 | 16.51 | 03.05.18 | 17.50 | Tripped on internal fault. |
| | | 26.05.18 | 13.56 | 26.05.18 | 15.39 | Tripped due to grid disturbance |
| | | 26.05.18 | 17.59 | 26.05.18 | 19.41 | |
| | | 03.06.18 | 07.23 | 03.06.18 | 12.16 | |
| | | 30.06.18 | 08.17 | 30.06.18 | 11.50 | |
| | | 12.07.18 | 17.16 | 12.07.18 | 18.27 | Tripped on internal fault. |
| | | 15.07.18 | 04.29 | 15.07.18 | 08.34 | |
| | | 24.07.18 | 12.37 | 24.07.18 | 13.39 | Unit tripped as unit -2 tripped. |
| | | 29.07.18 | 15.50 | 29.07.18 | 18.42 | |
| | | 14.08.18 | 19.30 | 14.08.18 | 22.45 | Tripped due to grid disturbance |
| | | 16.08.18 | 15.32 | 23.08.18 | 09.59 | GCB oil leakage. |
| | | 29.08.18 | 08.05 | 29.08.18 | 09.10 | Tripped on internal fault. |
| 29.08.18 | 14.01 | 29.08.18 | 16.28 | | | |

(D) BADARPUR THERMAL POWER STATION

| Unit | Capacity in MW | Outage | | Synchronization | | Reason of Outage |
|------|----------------|----------|-------|-----------------|-------|---|
| | | Date | Time | Date | Time | |
| 1 | 95 | 01.04.18 | 00.00 | 31.08.18 | 00.00 | Not in operation due to not meeting pollution norms |

| Unit | Capacity in MW | Outage | | Synchronization | | Reason of Outage |
|------|----------------|----------|-------|-----------------|-------|---|
| | | Date | Time | Date | Time | |
| 2 | 95 | 01.04.18 | 00.00 | 31.08.18 | 00.00 | Not in operation due to not meeting pollution norms |

| Unit | Capacity in MW | Outage | | Synchronization | | Reason of Outage |
|------|----------------|----------|-------|-----------------|-------|---|
| | | Date | Time | Date | Time | |
| 3 | 95 | 01.04.18 | 00.00 | 31.08.18 | 00.00 | Not in operation due to not meeting pollution norms |

| Unit | Capacity in MW | Outage | | Synchronization | | Reason of Outage |
|------|----------------|----------|-------|-----------------|-------|---|
| | | Date | Time | Date | Time | |
| 4 | 210 | 01.04.18 | 00.00 | 01.05.18 | 11.33 | Not in operation due to not meeting pollution norms |
| | | 03.05.18 | 13.29 | 13.05.18 | 00.42 | Reserve shutdown |
| | | 30.07.18 | 20.30 | 31.07.18 | 10.30 | Coal shortage |
| | | 31.07.18 | 10.30 | 01.08.18 | 05.29 | Reserve shutdown |
| | | 07.08.18 | 11.06 | 08.08.18 | 15.17 | Boiler tube leakage |
| | | 09.08.18 | 01.08 | 09.08.18 | 17.54 | ID Fan bearing temp high. |

| Unit | Capacity in MW | Outage | | Synchronization | | Reason of Outage |
|------|----------------|----------|-------|-----------------|-------|---|
| | | Date | Time | Date | Time | |
| 5 | 210 | 01.04.18 | 00.00 | 09.04.18 | 07.54 | Not in operation due to not meeting pollution norms |

(E) BAWANA CCGT POWER STATION

| Unit | Capacity in MW | Outage | | Synchronization | | Reason of Outage |
|------|----------------|----------|-------|-----------------|-------|--|
| | | Date | Time | Date | Time | |
| 1 | 216 | 21.04.18 | 0.00 | 23.04.18 | 07.00 | Machine shut down for Filter Replacement so half of STG #1 was also not available. |
| | | 16.06.18 | 08.02 | 16.06.18 | 23.59 | Unit taken out of DC for solenoid change |
| | | 28.06.18 | 00.50 | 30.06.18 | 23.59 | DP was running very high so unit taken out of DC for filter replacement. |
| | | 15.07.18 | 09.10 | 15.07.18 | 21.45 | Filter replacement and problem in compressor bleed (CBV) valve operation attended |
| | | 21.07.18 | 00.00 | 23.07.18 | 17.00 | Problem in purge valve resolved by replacement of solenoid and compressor washing done during this outage. |
| | | 17.08.18 | 13.40 | 17.08.18 | 22.00 | Unit tripped due to low lube oil header pressure, STG also tripped manually. |
| | | 28.08.18 | 05.08 | 28.08.18 | 18.45 | Unit tripped due to rotor earth fault. |

| Unit | Capacity in MW | Outage | | Synchronization | | Reason of Outage |
|------|----------------|----------|-------|-----------------|-------|--|
| | | Date | Time | Date | Time | |
| 2 | 216 | 16.06.18 | 08.02 | 16.06.18 | 23.59 | Unit taken out of DC for solenoid change |
| | | 28.06.18 | 00.50 | 30.06.18 | 23.59 | DP was running very high so unit taken out of DC for filter replacement. |
| | | 15.07.18 | 09.10 | 15.07.18 | 21.45 | Filter replacement and problem in compressor bleed (CBV) valve operation attended |
| | | 21.07.18 | 00.00 | 23.07.18 | 17.00 | Problem in purge valve resolved by replacement of solenoid and compressor washing done during this outage. |
| | | 17.08.18 | 13.40 | 17.08.18 | 22.00 | Unit tripped due to low lube oil header pressure, STG also tripped manually. |
| | | 28.08.18 | 05.08 | 28.08.18 | 18.45 | Unit tripped due to rotor earth fault. |

| Unit | Capacity in MW | Outage | | Synchronization | | Reason of Outage |
|----------|----------------|----------|-------|--|-------|---|
| | | Date | Time | Date | Time | |
| STG-1 | 254 | 02.04.18 | 06.49 | 02.04.18 | 11.58 | Field breaker and Excitation Trip generated due to Regulation Supply fuse failure. Circuit checked, Power fuse changed and machine synchronised to further test the system. |
| | | 02.04.18 | 12.12 | 02.04.18 | 13.34 | Again machine tripped on same fault. Fuse Barrier circuit replaced due to malfunctioning of micro switch contact. |
| | | 02.04.18 | 19.37 | 02.04.18 | 21.09 | Field breaker and Excitation Trip generated due to Regulation Supply fuse failure. The circuit of PLC and fuse barrier checked and digital I/O card which generates this signal changed, machine synchronised. |
| | | 02.04.18 | 21.50 | 02.04.18 | 22.27 | During HRSG paralleling STG tripped on Low Main steam temperature as HP Bypass#1 was not following reference properly, and loads on GTs were high for smooth paralleling. |
| | | 02.05.18 | 21.32 | 02.05.18 | 22.21 | The cold gas temp control valve was fully open under full-module operation with cold gas temp around 43 deg. As GT #2 was stopped in accordance with the system demand, the load on STG #1 reduced to around 95 MW lowering the cold gas temp. With residual activities of isolation of HRSG #2 in progress, command was given to reduce the opening of temp-control-valve. The valve is designed for inching operation. However, the valve closed completely shutting of cooling water supply resulting in high cold-gas temp and leading to protection-trip on the same |
| | | 20.05.18 | 07.35 | 20.05.18 | 15.42 | STG#1 Stopped due to Common Thermal Overload alarm appeared around 07:35 hrs. Intermittent flashover & smoke observed at Transformer cooling fan supply control -panel at site . All running cooling fans tripped & temperature indication at ECP disappeared. STG#1 Stopped/Tripped manually under the circumstances & panel supply made off. |
| | | 16.06.18 | 08.02 | 16.06.18 | 23.59 | Unit taken out of DC for solenoid change |
| | | 28.06.18 | 00.50 | 30.06.18 | 23.59 | DP was running very high so unit taken out of DC for filter replacement. |
| | | 15.07.18 | 09.10 | 15.07.18 | 21.45 | Filter replacement and problem in compressor bleed (CBV) valve operation attended |
| | | 21.07.18 | 00.00 | 23.07.18 | 17.00 | Problem in purge valve resolved by replacement of solenoid and compressor washing done during this outage. |
| | | 27.07.18 | 00.00 | 30.07.18 | 19.30 | PHE Cleaning |
| | | 17.08.18 | 13.40 | 17.08.18 | 22.00 | Unit tripped due to low lube oil header pressure, STG also tripped manually. |
| | | 28.08.18 | 05.08 | 28.08.18 | 18.45 | Unit tripped due to rotor earth fault. |
| 29.08.18 | 15.29 | 29.08.18 | 16.35 | Unit tripped due to generator electrical protection alarm. | | |

| Unit | Capacity in MW | Outage | | Synchronization | | Reason of Outage |
|------|----------------|----------|-------|-----------------|-------|--|
| | | Date | Time | Date | Time | |
| 3 | 216 | 17.04.18 | 00.00 | 30.04.18 | 23.59 | Minor overhauling of Generator and Upgradation of GT#3 and BHM installation. |
| | | 29.06.18 | 00.00 | 29.06.18 | 02.00 | Desynch due to problem in GCS (BMS not firing). |
| | | 14.07.18 | 10.00 | 14.07.18 | 14.00 | Normalization of 6.6kV System Mod#2 |

| Unit | Capacity in MW | Outage | | Synchronization | | Reason of Outage |
|------|----------------|----------|-------|-----------------|-------|---|
| | | Date | Time | Date | Time | |
| 4 | 216 | 01.04.18 | 00.00 | 16.04.18 | 18.00 | Machine taken out of DC for Planned maintenance.(Combustion inspection) |
| | | 22.05.18 | 15.33 | 22.05.18 | 16.15 | GT#4 came on FSNL at 15:33 hrs. due to AVR fault and subsequent tripping of GCB. Unit was test synch at 16:20 hrs. but due to poor gas pipeline hydraulics GT#4 taken out of DC wef 16:15 hrs.. |
| | | 22.05.18 | 16.15 | | | |
| | | 24.05.18 | 21.46 | 25.05.18 | 23.59 | GT#4 came on FSNL due to AVR fault and subsequent tripping of GCB. Unit was test synch at 22:33 hrs.and stopped at 22:44 hrs due to SLDC backdown. |
| | | 14.07.18 | 10.00 | | | |

| Unit | Capacity in MW | Outage | | Synchronization | | Reason of Outage |
|-------|----------------|----------|-------|-----------------|-------|--|
| | | Date | Time | Date | Time | |
| STG-2 | 254 | 01.04.18 | 00.00 | 30.04.18 | 23.59 | STG#2 tripped on Bucholz relay operated. Transformer is under revival. |

(F) RITHALA POWER STATION

| Unit | Capacity in MW | Outage | | Synchronization | | Reason of Outage |
|------|----------------|----------|-------|-----------------|-------|--|
| | | Date | Time | Date | Time | |
| 1 | 31.8 | 19.03.13 | 17:32 | 31.08.18 | 23.59 | Stopped due to low demand and high frequency |

| Unit | Capacity in MW | Outage | | Synchronization | | Reason of Outage |
|------|----------------|----------|-------|-----------------|-------|--|
| | | Date | Time | Date | Time | |
| 2 | 31.8 | 07.06.13 | 22:41 | 31.08.18 | 23.59 | Stopped due to low demand and high frequency |

| Unit | Capacity in MW | Outage | | Synchronization | | Reason of Outage |
|------|----------------|----------|-------|-----------------|-------|--|
| | | Date | Time | Date | Time | |
| STG | 31.8 | 07.06.13 | 22:38 | 31.08.18 | 23.59 | Stopped due to low demand and high frequency |

4 ALLOCATION OF POWER TO DELHI

A) Time block 00.00hrs. to 24.00hrs. @ 0% allocation from Unallocated Quota from 01.04.2017

| Name of the Stn | Installed capacity | Total Un-allocated | Basic Allocation | Basic Allocation at periphery | Allocation out of Unallocated Quota | Allocation out of Un-allocation Quota at Delhi periphery | Total allocation at Delhi periphery |
|--|--------------------|--------------------|------------------|-------------------------------|-------------------------------------|--|-------------------------------------|
| 1 | 2 | 3 | 4 | 5 | 6 | 7 | (8)=(5)+(7) |
| NTPC STATIONS | | | | | | | |
| Singrauli STPS | 2000 | 300 | 150 | 130 | 0 | 0 | 130 |
| Rihand-I | 1000 | 150 | 100 | 87 | 0 | 0 | 87 |
| Rihand Stage -II | 1000 | 150 | 126 | 109 | 0 | 0 | 109 |
| Rihand Stage -III | 1000 | 150 | 132 | 115 | 0 | 0 | 115 |
| ANTA GPS | 419 | 63 | 44 | 41 | 0 | 0 | 41 |
| Auriya GPS | 663.36 | 99 | 72 | 67 | 0 | 0 | 67 |
| Dadri GPS | 829.78 | 129 | 91 | 85 | 0 | 0 | 85 |
| Dadri NCTPS (Th) | 840 | 0 | 756 | 657 | 0 | 0 | 657 |
| Dadri NCTPS (Th) Stage-II | 980 | 147 | 735 | 639 | 0 | 0 | 639 |
| Unchahaar-I TPS | 420 | 20 | 24 | 21 | 0 | 0 | 21 |
| Unchahaar-II TPS | 420 | 63 | 47 | 41 | 0 | 0 | 41 |
| Unchahaar-III TPS | 210 | 31 | 29 | 25 | 0 | 0 | 25 |
| TOTAL | 9782 | 1302 | 2306 | 2016 | 0 | 0 | 2016 |
| NHPC | | | | | | | |
| Baira Suil HPS | 180 | 0 | 20 | 19 | 0 | 0 | 19 |
| Salal HPS | 690 | 0 | 80 | 76 | 0 | 0 | 76 |
| Tanakpur HEP | 94 | 0 | 12 | 11 | 0 | 0 | 11 |
| Chamera HEP | 540 | 0 | 43 | 41 | 0 | 0 | 41 |
| Chamera-II HEP | 300 | 54 | 40 | 38 | 0 | 0 | 38 |
| Chamera-III HEP | 231 | 35 | 29 | 28 | 0 | 0 | 28 |
| URI-I HEP | 480 | 0 | 53 | 50 | 0 | 0 | 50 |
| URI-II HEP | 240 | 0 | 32 | 31 | 0 | 0 | 31 |
| Sewa HEP | 120 | 18 | 16 | 15 | 0 | 0 | 15 |
| Dhaulti Ganga HEP | 280 | 42 | 37 | 35 | 0 | 0 | 35 |
| Dulhasti HEP | 390 | 58 | 50 | 48 | 0 | 0 | 48 |
| Parbati-III HEP | 520 | 66 | 66 | 63 | 0 | 0 | 63 |
| TOTAL | 4065 | 272 | 479 | 455 | 0 | 0 | 455 |
| NPC | | | | | | | |
| Narora APS | 440 | 64 | 47 | 41 | 0 | 0 | 41 |
| RAPP (C) | 440 | 64 | 56 | 49 | 0 | 0 | 49 |
| TOTAL | 880 | 128 | 103 | 89 | 0 | 0 | 89 |
| SJVNL | | | | | | | |
| Nathpa Jhakri HEP | 1500 | 149 | 142 | 135 | 0 | 0 | 135 |
| THDC | | | | | | | |
| Tehri Hydro | 1000 | 99 | 63 | 60 | 0 | 0 | 60 |
| Koteshwar HEP | 400 | 40 | 39 | 37 | 0 | 0 | 37 |
| TOTAL | 1400 | 139 | 102 | 97 | 0 | 0 | 97 |
| Total | 17627 | 1990 | 3132 | 2793 | 0 | 0 | 2793 |
| Allocation from ER and Tala HEP | | | | | | | |
| Farakka | 1600 | 0 | 22 | 19 | 0 | 0 | 19 |
| Kahalgaon | 840 | 0 | 51 | 43 | 0 | 0 | 43 |
| Talchar | 1000 | 0 | 0 | 0 | 0 | 0 | 0 |
| Tala HEP | 1020 | 153 | 30 | 25 | 0 | 0 | 25 |
| Kahalgaon-II | 1500 | 0 | 157 | 131 | 0 | 0 | 131 |
| Total ER | 5960 | 153 | 261 | 217 | 0 | 0 | 217 |
| Joint Venture | | | | | | | |
| Jhajjar TPS | 1500 | 114 | 693 | 622 | 0 | 0 | 622 |
| Ultra Mega Projects | | | | | | | |
| Sasan | 3960 | 0 | 446 | 400 | 0 | 0 | 400 |
| Grand Total | 29047 | 2257 | 4531 | 4032 | 0 | 0 | 4032 |

5 ALLOCATION OF POWER TO DISCOMS

A) ALLOCATION OF POWER TO VARIOUS LICENCEES AS PER ORDER OF DERC AND DECISION OF GNCTD FOR ALLOCATION OF CENTRAL SECTOR STATIONS (DADRI THERMAL & BTPS) AND STATE SECTOR GENERATING STATIONS w.e.f. 06.08.2013.

(Allocation In %)

(A) 10.00hrs. to 17.00hrs.

| SOURCES | LICENSEES | | | | | |
|--------------------------------------|-----------|------|--------|--------|--------|--------|
| | NDMC | MES | NDPL | BRPL | BYPL | TOTAL |
| 1. Central Sector without Dadri (Th) | 0 | 0 | 29.18 | 43.58 | 27.24 | 100.00 |
| 2. Dadri (Th) | 16.63 | 0 | 24.22 | 36.86 | 22.39 | 100.00 |
| 3. BTPS | 17.73 | 7.09 | 21.81 | 33.2 | 20.17 | 100.00 |
| 4. RPH | 0 | 0 | 29.025 | 44.133 | 26.842 | 100.00 |
| 5. GT | 0 | 0 | 29.02 | 44.16 | 26.82 | 100.00 |
| 6. Pragati | 30.3 | 0 | 20.22 | 30.78 | 18.7 | 100.00 |
| 7. DVC | 0 | 0 | 29.18 | 43.58 | 27.24 | 100.00 |
| 8. BAWANA CCGT* | 7.30 | 1.82 | 20.688 | 30.888 | 19.304 | 80.00 |

(B) 00.00hrs. to 10.00hrs. and 17.00hrs. to 24.00hrs.

| SOURCES | LICENSEES | | | | | |
|--------------------------------------|-----------|------|--------|--------|--------|--------|
| | NDMC | MES | NDPL | BRPL | BYPL | TOTAL |
| 1. Central Sector without Dadri (Th) | 0 | 0 | 29.18 | 43.58 | 27.24 | 100.00 |
| 2. Dadri (Th) | 16.53 | 0 | 24.22 | 36.86 | 22.39 | 100.00 |
| 3. BTPS | 17.73 | 7.09 | 21.81 | 33.2 | 20.17 | 100.00 |
| 4. RPH | 0 | 0 | 29.025 | 44.133 | 26.842 | 100.00 |
| 5. GT | 0 | 0 | 29.02 | 44.16 | 26.82 | 100.00 |
| 6. Pragati | 30.3 | 0 | 20.22 | 30.78 | 18.7 | 100.00 |
| 7. DVC | 0 | 0 | 29.18 | 43.58 | 27.24 | 100.00 |
| 8. BAWANA CCGT* | 7.30 | 1.82 | 20.688 | 30.888 | 19.304 | 80.00 |

* 20% POWER OF BAWANA CCGT ALLOCATED TO HARYANA (10%) & PUNJAB (10%)

6 POWER AVAILABILITY-DEMAND POSITION AT THE TIME OF PEAK DEMAND MET DURING AUG 2018

| Date | Time of peak demand | Generation within Delhi | | | | | | | | | | Import from the Grid | Schedule from the Grid | OD(-)/UD(+) | Demand met | Shedding | Un-Restricted Demand |
|------|---------------------|-------------------------|-----|------|---------|--------|--------|------------|--------|------|----------------|----------------------|------------------------|----------------|----------------|----------|----------------------|
| | | RP H | GT | PPCL | Rithala | Bawana | Towmcl | East Delhi | DMS WL | BTPS | Total | | | | | | |
| (1) | (2) | (3) | (4) | (5) | (6) | (7) | (8) | | | | (9)=(3) to (8) | (10) | (11) | (12)=(11)-(10) | (13)=(11)+(12) | (14) | (15)=(13)+(14) |
| 1 | 23.02.10 | 0 | 71 | 148 | 0 | 262 | 19 | 4 | 5 | 302 | 811 | 4975 | 4949 | 26 | 5786 | 0 | 5786 |
| 2 | 22.54.44 | 0 | 73 | 147 | 0 | 456 | 17 | 3 | 15 | 319 | 1030 | 4899 | 4925 | -26 | 5929 | 0 | 5929 |
| 3 | 00.01.05 | 0 | 75 | 148 | 0 | 447 | 16 | 2 | 17 | 304 | 1009 | 4653 | 4746 | -93 | 5662 | 0 | 5662 |
| 4 | 23.20.32 | 0 | 75 | 262 | 0 | 275 | 17 | 5 | 18 | 296 | 948 | 4722 | 4675 | 47 | 5670 | 0 | 5670 |
| 5 | 00.00.12 | 0 | 76 | 261 | 0 | 276 | 19 | 4 | 18 | 306 | 960 | 4560 | 4569 | -9 | 5520 | 0 | 5520 |
| 6 | 00.00.10 | 0 | 79 | 262 | 0 | 256 | 19 | 4 | 16 | 303 | 939 | 4115 | 4174 | -59 | 5054 | 0 | 5054 |
| 7 | 15.14.28 | 0 | 75 | 147 | 0 | 260 | 16 | -1 | 15 | 173 | 685 | 4452 | 4385 | 67 | 5137 | 0 | 5137 |
| 8 | 22.59.49 | 0 | 76 | 149 | 0 | 286 | 15 | -1 | 10 | 251 | 786 | 4572 | 4535 | 37 | 5358 | 0 | 5358 |
| 9 | 22.55.04 | 0 | 75 | 149 | 0 | 480 | 18 | -1 | 16 | 351 | 1088 | 4765 | 4738 | 27 | 5853 | 0 | 5853 |
| 10 | 22.57.56 | 0 | 76 | 149 | 0 | 430 | 17 | -1 | 14 | 341 | 1026 | 4727 | 4818 | -91 | 5753 | 0 | 5753 |
| 11 | 23.00.35 | 0 | 73 | 147 | 0 | 425 | 18 | -1 | 16 | 306 | 984 | 4791 | 4715 | 76 | 5775 | 0 | 5775 |
| 12 | 00.00.46 | 0 | 71 | 147 | 0 | 262 | 18 | -1 | 15 | 308 | 820 | 4793 | 4597 | 196 | 5613 | 7 | 5620 |
| 13 | 23.08.48 | 0 | 75 | 144 | 0 | 307 | 17 | 4 | 14 | 320 | 881 | 4784 | 4752 | 32 | 5665 | 0 | 5665 |
| 14 | 23.02.26 | 0 | 74 | 144 | 0 | 288 | 14 | 2 | 16 | 303 | 841 | 4973 | 5004 | -31 | 5814 | 11 | 5825 |
| 15 | 00.00.22 | 0 | 73 | 144 | 0 | 276 | 15 | 2 | 17 | 297 | 824 | 4585 | 4981 | -396 | 5409 | 0 | 5409 |
| 16 | 15.16.43 | 0 | 72 | 141 | 0 | 33 | 17 | 4 | 16 | 347 | 630 | 5214 | 5207 | 7 | 5844 | 0 | 5844 |
| 17 | 22.46.00 | 0 | 74 | 94 | 0 | 293 | 15 | 3 | 15 | 302 | 796 | 5140 | 5176 | -36 | 5936 | 0 | 5936 |
| 18 | 15.29.06 | 0 | 71 | 92 | 0 | 289 | 16 | 4 | 15 | 345 | 832 | 4926 | 4942 | -16 | 5758 | 0 | 5758 |
| 19 | 23.03.12 | 0 | 72 | 97 | 0 | 283 | 19 | 1 | 13 | 299 | 784 | 4580 | 4708 | -128 | 5364 | 0 | 5364 |
| 20 | 15.29.31 | 0 | 94 | 93 | 0 | 284 | 16 | 5 | 14 | 307 | 813 | 5016 | 4911 | 105 | 5829 | 5 | 5834 |
| 21 | 22.57.39 | 0 | 103 | 90 | 0 | 429 | 18 | -2 | 18 | 299 | 955 | 4925 | 4889 | 36 | 5880 | 21 | 5901 |
| 22 | 00.01.00 | 0 | 104 | 91 | 0 | 428 | 18 | -1 | 18 | 303 | 961 | 4728 | 4705 | 23 | 5689 | 0 | 5689 |
| 23 | 23.00.28 | 0 | 75 | 144 | 0 | 428 | 18 | -1 | 16 | 303 | 983 | 4447 | 4489 | -42 | 5430 | 0 | 5430 |
| 24 | 22.59.07 | 0 | 75 | 144 | 0 | 463 | 14 | 2 | 10 | 303 | 1011 | 4469 | 4426 | 43 | 5480 | 0 | 5480 |
| 25 | 00.00.25 | 0 | 74 | 145 | 0 | 440 | 17 | -1 | 13 | 302 | 990 | 4297 | 4399 | -102 | 5287 | 0 | 5287 |
| 26 | 23.10.59 | 0 | 75 | 143 | 0 | 427 | 18 | -2 | 15 | 294 | 970 | 4233 | 4088 | 145 | 5203 | 0 | 5203 |
| 27 | 22.51.23 | 0 | 74 | 144 | 0 | 446 | 18 | 6 | 15 | 306 | 1009 | 4401 | 4378 | 23 | 5410 | 0 | 5410 |
| 28 | 15.21.01 | 0 | 73 | 143 | 0 | 281 | 15 | -1 | 6 | 299 | 816 | 4368 | 4333 | 35 | 5184 | 6 | 5190 |
| 29 | 16.44.14 | 0 | 72 | 144 | 0 | 312 | 16 | -1 | -2 | 308 | 849 | 4281 | 4148 | 133 | 5130 | 0 | 5130 |
| 30 | 22.43.18 | 0 | 70 | 145 | 0 | 502 | 17 | -1 | -1 | 323 | 1055 | 4508 | 4502 | 6 | 5563 | 0 | 5563 |
| 31 | 22.57.59 | 0 | 71 | 144 | 0 | 483 | 12 | 1 | -1 | 308 | 1018 | 4559 | 4445 | 114 | 5577 | 0 | 5577 |

POWER AVAILABILITY- DEMAND POSITION AT THE TIME OF MAXIMUM UNRESTRICTED DEMAND DURING AUG 2018

| Date | Time of peak demand | Generation within Delhi | | | | | | | | | | Import from the Grid | Schedule from the Grid | OD(-)/UD(+) | Demand met | Shedding | Un-Restricted Demand |
|------|---------------------|-------------------------|-----|------|---------|--------|--------|------------|--------|------|-----------------|----------------------|------------------------|-------------------|------------------|----------|----------------------|
| | | RP H | GT | PPCL | Rithala | Bawana | Towmcl | East Delhi | DMS WL | BTPS | Total | | | | | | |
| (1) | (2) | (3) | (4) | (5) | (6) | (7) | (8) | | | | (9)= (3) to (8) | (10) | (11) | (12)= (11) - (10) | (13)= (11)+ (12) | (14) | (15)= (13)+ (14) |
| 1 | 23.02.10 | 0 | 71 | 148 | 0 | 262 | 19 | 4 | 5 | 302 | 811 | 4975 | 4949 | 26 | 5786 | 0 | 5786 |
| 2 | 22.54.44 | 0 | 73 | 147 | 0 | 456 | 17 | 3 | 15 | 319 | 1030 | 4899 | 4925 | -26 | 5929 | 0 | 5929 |
| 3 | 00.01.05 | 0 | 75 | 148 | 0 | 447 | 16 | 2 | 17 | 304 | 1009 | 4653 | 4746 | -93 | 5662 | 0 | 5662 |
| 4 | 23.20.32 | 0 | 75 | 262 | 0 | 275 | 17 | 5 | 18 | 296 | 948 | 4722 | 4675 | 47 | 5670 | 0 | 5670 |
| 5 | 00.00.12 | 0 | 76 | 261 | 0 | 276 | 19 | 4 | 18 | 306 | 960 | 4560 | 4569 | -9 | 5520 | 0 | 5520 |
| 6 | 00.00.10 | 0 | 79 | 262 | 0 | 256 | 19 | 4 | 16 | 303 | 939 | 4115 | 4174 | -59 | 5054 | 0 | 5054 |
| 7 | 15.14.28 | 0 | 75 | 147 | 0 | 260 | 16 | -1 | 15 | 173 | 685 | 4452 | 4385 | 67 | 5137 | 0 | 5137 |
| 8 | 22.59.49 | 0 | 76 | 149 | 0 | 286 | 15 | -1 | 10 | 251 | 786 | 4572 | 4535 | 37 | 5358 | 0 | 5358 |
| 9 | 22.55.04 | 0 | 75 | 149 | 0 | 480 | 18 | -1 | 16 | 351 | 1088 | 4765 | 4738 | 27 | 5853 | 0 | 5853 |
| 10 | 22.57.56 | 0 | 76 | 149 | 0 | 430 | 17 | -1 | 14 | 341 | 1026 | 4727 | 4818 | -91 | 5753 | 0 | 5753 |
| 11 | 23.00.35 | 0 | 73 | 147 | 0 | 425 | 18 | -1 | 16 | 306 | 984 | 4791 | 4715 | 76 | 5775 | 0 | 5775 |
| 12 | 00.00.46 | 0 | 71 | 147 | 0 | 262 | 18 | -1 | 15 | 308 | 820 | 4793 | 4597 | 196 | 5613 | 7 | 5620 |
| 13 | 23.08.48 | 0 | 75 | 144 | 0 | 307 | 17 | 4 | 14 | 320 | 881 | 4784 | 4752 | 32 | 5665 | 0 | 5665 |
| 14 | 23.02.26 | 0 | 74 | 144 | 0 | 288 | 14 | 2 | 16 | 303 | 841 | 4973 | 5004 | -31 | 5814 | 11 | 5825 |
| 15 | 00.00.22 | 0 | 73 | 144 | 0 | 276 | 15 | 2 | 17 | 297 | 824 | 4585 | 4981 | -396 | 5409 | 0 | 5409 |
| 16 | 15.16.43 | 0 | 72 | 141 | 0 | 33 | 17 | 4 | 16 | 347 | 630 | 5214 | 5207 | 7 | 5844 | 0 | 5844 |
| 17 | 22.46.00 | 0 | 74 | 94 | 0 | 293 | 15 | 3 | 15 | 302 | 796 | 5140 | 5176 | -36 | 5936 | 0 | 5936 |
| 18 | 15.29.06 | 0 | 71 | 92 | 0 | 289 | 16 | 4 | 15 | 345 | 832 | 4926 | 4942 | -16 | 5758 | 0 | 5758 |
| 19 | 23.03.12 | 0 | 72 | 97 | 0 | 283 | 19 | 1 | 13 | 299 | 784 | 4580 | 4708 | -128 | 5364 | 0 | 5364 |
| 20 | 15.29.31 | 0 | 94 | 93 | 0 | 284 | 16 | 5 | 14 | 307 | 813 | 5016 | 4911 | 105 | 5829 | 5 | 5834 |
| 21 | 22.57.39 | 0 | 103 | 90 | 0 | 429 | 18 | -2 | 18 | 299 | 955 | 4925 | 4889 | 36 | 5880 | 21 | 5901 |
| 22 | 00.01.00 | 0 | 104 | 91 | 0 | 428 | 18 | -1 | 18 | 303 | 961 | 4728 | 4705 | 23 | 5689 | 0 | 5689 |
| 23 | 23.00.28 | 0 | 75 | 144 | 0 | 428 | 18 | -1 | 16 | 303 | 983 | 4447 | 4489 | -42 | 5430 | 0 | 5430 |
| 24 | 22.59.07 | 0 | 75 | 144 | 0 | 463 | 14 | 2 | 10 | 303 | 1011 | 4469 | 4426 | 43 | 5480 | 0 | 5480 |
| 25 | 00.00.25 | 0 | 74 | 145 | 0 | 440 | 17 | -1 | 13 | 302 | 990 | 4297 | 4399 | -102 | 5287 | 0 | 5287 |
| 26 | 23.10.59 | 0 | 75 | 143 | 0 | 427 | 18 | -2 | 15 | 294 | 970 | 4233 | 4088 | 145 | 5203 | 0 | 5203 |
| 27 | 22.51.23 | 0 | 74 | 144 | 0 | 446 | 18 | 6 | 15 | 306 | 1009 | 4401 | 4378 | 23 | 5410 | 0 | 5410 |
| 28 | 15.21.01 | 0 | 73 | 143 | 0 | 281 | 15 | -1 | 6 | 299 | 816 | 4368 | 4333 | 35 | 5184 | 6 | 5190 |
| 29 | 16.44.14 | 0 | 72 | 144 | 0 | 312 | 16 | -1 | -2 | 308 | 849 | 4281 | 4148 | 133 | 5130 | 0 | 5130 |
| 30 | 22.43.18 | 0 | 70 | 145 | 0 | 502 | 17 | -1 | -1 | 323 | 1055 | 4508 | 4502 | 6 | 5563 | 0 | 5563 |
| 31 | 22.57.59 | 0 | 71 | 144 | 0 | 483 | 12 | 1 | -1 | 308 | 1018 | 4559 | 4445 | 114 | 5577 | 0 | 5577 |

SOURCEWISE SCHEDULED DRAWL FROM NORTHERN GRID AS WELL AS AVAILABILITY WITHIN DELHI FOR AUG 2018

A) AVAILABILITY FROM GENCO AND PRAGATI STNs. (all fig in MUs)

| | |
|---|---------|
| A (i) RPH | 0.000 |
| (ii) GT+STG | 60.848 |
| (iii) PRAGATI | 113.605 |
| (iv) RITHALA | 0.000 |
| (v) BAWANA CCGT | 255.364 |
| (vi) Timarpur – Okhla | 15.064 |
| EDWPCL | 2.351 |
| DMSWL | 11.582 |
| TOTAL | 458.814 |
| B) AVAILABILITY FROM BTPS | 218.948 |
| C) AUXILIARY CONSUMPTION OF GENERATING STNs. EXCLUDING BTPS | 20.466 |
| D) NET GENERATION AVAILABLE WITHIN DELHI(A+B-C) | 657.316 |

B) SOURCE WISE SCHEDULED DRAWL FROM THE NORTHERN GRID

| NAME OF THE STATION | AVAILABILITY AT POWER PLANT | AVAILABILITY AT DELHI PERIPHERY | ALLOCATION MADE BY NRLDC AT POWER PLANT | ALLOCATION MADE BY NRLDC AT DELHI PERIPHERY |
|---------------------|-----------------------------|---------------------------------|---|---|
| B/SUIL | 8.473 | 8.259 | 8.473 | 8.259 |
| SALAL | 56.467 | 55.321 | 56.467 | 55.321 |
| SASAN | 275.904 | 266.215 | 273.838 | 264.222 |
| TANKAPUR | 6.899 | 6.725 | 6.899 | 6.725 |
| CHAMERA | 31.337 | 30.702 | 31.336 | 30.702 |
| CHAMERA -II | 28.418 | 27.841 | 28.418 | 27.841 |
| CHAMERA -III | 20.408 | 19.994 | 20.407 | 19.994 |
| DHAULIGANGA | 23.997 | 23.512 | 23.997 | 23.512 |
| SEWA -2 | 8.048 | 7.884 | 8.048 | 7.884 |
| URI | 34.916 | 34.036 | 34.916 | 34.036 |
| URI-II | 22.232 | 21.671 | 22.232 | 21.671 |
| KOLDAM | 0.000 | 0.000 | 0.000 | 0.000 |
| KOTESHWAR | 21.374 | 20.886 | 21.374 | 20.886 |
| PARBATI3 | 20.062 | 19.653 | 20.062 | 19.653 |
| RAMPUR | 0.000 | 0.000 | 0.000 | 0.000 |
| MUNDRA_UMPP | 0.000 | 0.000 | 0.000 | 0.000 |
| ANTA (GAS) | 0.000 | 0.000 | 0.000 | 0.000 |
| ANTA (RLNG) | 20.923 | 20.216 | 0.000 | 0.000 |
| ANTA (LIQUID) | 10.452 | 10.098 | 0.000 | 0.000 |
| DADRI (GAS) | 2.629 | 2.588 | 1.320 | 1.299 |
| DADRI (RLNG) | 21.496 | 21.121 | 0.260 | 0.256 |
| DADRI (LIQUID) | 40.283 | 39.567 | 0.000 | 0.000 |
| AURAIYA (GAS) | 6.044 | 5.892 | 2.460 | 2.398 |
| AURAIYA (RLNG) | 26.688 | 26.012 | 0.000 | 0.000 |
| AURAIYA (LIQUID) | 18.397 | 17.936 | 0.004 | 0.003 |
| SINGRAULI | 86.369 | 83.757 | 73.176 | 70.966 |
| SINGRAULI_HYDRO | 0.000 | 0.000 | 0.000 | 0.000 |
| RIHAND -I | 66.567 | 64.561 | 58.943 | 57.168 |
| RIHAND -II | 88.354 | 85.688 | 83.652 | 81.129 |
| RIHAND -III | 92.491 | 89.701 | 77.271 | 74.941 |
| UNCHAHAAR-I | 12.037 | 11.766 | 9.254 | 9.046 |
| UNCHAHAAR-II | 26.118 | 25.519 | 18.501 | 18.077 |
| UNCHAHAAR-III | 16.858 | 16.472 | 12.270 | 11.989 |
| UNCHAHAAR-IV | 0.000 | 0.000 | 0.000 | 0.000 |
| DADRI (TH) | 511.451 | 502.473 | 293.395 | 288.180 |
| DADRI (TH) STAGE-II | 507.012 | 498.107 | 363.642 | 357.230 |
| NAPP | 28.571 | 27.852 | 28.571 | 27.852 |
| RAPP 'B' | 0.000 | 0.000 | 0.000 | 0.000 |
| RAPP 'C' | 38.582 | 37.418 | 38.582 | 37.418 |
| NATHPA JHAKRI | 88.875 | 86.628 | 88.875 | 86.628 |
| DULASTI | 32.928 | 32.260 | 32.928 | 32.260 |

| NAME OF THE STATION | AVAILABILITY AT POWER PLANT | AVAILABILITY AT DELHI PERIPHERY | ALLOCATION MADE BY NRLDC AT POWER PLANT | ALLOCATION MADE BY NRLDC AT DELHI PERIPHERY |
|-------------------------------|-----------------------------|---------------------------------|---|---|
| TEHRI | 38.046 | 37.179 | 38.046 | 37.179 |
| JHAJJAR | 461.988 | 454.895 | 245.702 | 241.926 |
| KHELGAON | 31.402 | 30.690 | 22.125 | 21.623 |
| KHELGAON-II | 109.360 | 106.879 | 87.673 | 85.683 |
| FARAKA | 12.535 | 12.313 | 8.364 | 8.216 |
| TALA | 22.602 | 22.034 | 22.602 | 22.034 |
| TALCHER | 0.000 | 0.000 | 0.000 | 0.000 |
| DVC | 232.451 | 230.680 | 230.680 | 229.480 |
| CHATTISHGARH | 0.000 | 0.000 | 0.000 | 0.000 |
| ADHPL (KULLU) | 5.531 | 5.447 | 5.447 | 5.420 |
| MEGHALAYA | 0.000 | 0.000 | 0.000 | 0.000 |
| MAHARASHTRA | 0.076 | 0.075 | 0.075 | 0.074 |
| ANDHRA PRADESH | 62.280 | 61.801 | 61.801 | 61.481 |
| MADHYA PRADESH | 108.761 | 107.591 | 107.591 | 107.033 |
| METHON POWER(NDPL)LT-06 | 150.348 | 149.201 | 149.201 | 148.424 |
| DVC MEJIA (LT-08)(BYPL) | 39.299 | 39.018 | 39.018 | 38.803 |
| URS | 0.000 | 0.000 | 0.000 | 0.000 |
| JAMMU & KASHMIR | 67.235 | 66.550 | 66.550 | 66.205 |
| HIMACHAL PRADESH | 382.390 | 376.579 | 376.579 | 374.622 |
| JHARKHAND | 22.379 | 22.208 | 22.208 | 22.093 |
| MIZORAM | 6.502 | 6.386 | 6.386 | 6.353 |
| NAGALAND | 3.281 | 3.260 | 3.260 | 3.243 |
| DVC LT-9 | 0.000 | 0.000 | 0.000 | 0.000 |
| HARYANA (LT-05) | 49.975 | 49.588 | 49.588 | 49.328 |
| SIKKIM | 0.000 | 0.000 | 0.000 | 0.000 |
| WEST BENGAL | 0.000 | 0.000 | 0.000 | 0.000 |
| ORISSA MT-20 JITPL -DVC | 4.400 | 4.348 | 4.348 | 4.325 |
| TAMILNAIDU | 0.000 | 0.000 | 0.000 | 0.000 |
| MANIPUR | 0.000 | 0.000 | 0.000 | 0.000 |
| RAJASTHAN(SOLAR) BRPL-LT36 | 3.679 | 3.605 | 3.605 | 3.586 |
| RAJASTHAN(SOLAR) BYPL - LT-35 | 3.721 | 3.646 | 3.646 | 3.627 |
| RAJASTHAN(SOLAR) TPDDL LT-31 | 3.574 | 3.502 | 3.502 | 3.483 |
| TO JHARKHAND | 0.000 | 0.000 | 0.000 | 0.000 |
| TO ANDHRA | -8.845 | -8.955 | -8.955 | -9.048 |
| TO MADHYA PRADESH | -0.781 | -0.796 | -0.796 | -0.804 |
| TO WEST BENGAL | -0.647 | -0.652 | -0.652 | -0.659 |
| TO UTTAR PRADESH | 0.000 | 0.000 | 0.000 | 0.000 |
| TO J&K | 0.000 | 0.000 | 0.000 | 0.000 |
| TO TAMILNADU | 0.000 | 0.000 | 0.000 | 0.000 |
| TO GOA | 0.000 | 0.000 | 0.000 | 0.000 |
| TO MEGHALAYA | 0.000 | 0.000 | 0.000 | 0.000 |
| TO MANIPUR | 0.000 | 0.000 | 0.000 | 0.000 |
| BTPS TO MP | 0.000 | 0.000 | 0.000 | 0.000 |
| TO HIMACHAL PRADESH | 0.000 | 0.000 | 0.000 | 0.000 |
| TO HARYANA | 0.000 | 0.000 | 0.000 | 0.000 |
| POWER EXCHANGE(IEX) | 4.821 | 4.794 | 4.821 | 4.794 |
| TO POWER EXCHANGE (IEX) | -285.697 | -288.667 | -285.697 | -288.667 |
| POWER EXCHANGE(PX) | 0.000 | 0.000 | 0.000 | 0.000 |
| TO POWER EXCHANGE (PX) | 0.000 | 0.000 | 0.000 | 0.000 |
| TO SHARE PROJECT (HARYANA) | -21.958 | -22.185 | -21.958 | -22.185 |
| TO SHARE PROJECT (PUNJAB) | -21.926 | -22.153 | -21.926 | -22.153 |
| TOTAL | 3788.442 | 3707.189 | 2962.404 | 2903.066 |

C) AGENCY WISE BREAKUP OF ENERGY SCHEDULED DRAWL FROM THE GRID

| NAME OF THE STATION | AVAILABILITY AT POWER PLANT | AVAILABILITY AT DELHI PERIPHERY | ALLOCATION MADE BY NRLDC AT POWER PLANT | ALLOCATION MADE BY NRLDC AT DELHI PERIPHERY |
|----------------------------|-----------------------------|---------------------------------|---|---|
| NTPC - NR | 1554.168 | 1521.472 | 994.146 | 972.684 |
| NTPC - ER | 153.297 | 149.881 | 118.163 | 115.522 |
| NHPC | 294.185 | 287.858 | 294.183 | 287.858 |
| NPC | 67.152 | 65.270 | 67.152 | 65.270 |
| SASAN | 275.904 | 266.215 | 273.838 | 264.222 |
| KOTESHWAR | 21.374 | 20.886 | 21.374 | 20.886 |
| MUNDRA_UMPP | 0.000 | 0.000 | 0.000 | 0.000 |
| NATHPA JHAKRI | 88.875 | 86.628 | 88.875 | 86.628 |
| TEHRI | 38.046 | 37.179 | 38.046 | 37.179 |
| TALA | 22.602 | 22.034 | 22.602 | 22.034 |
| JHAJJAR | 461.988 | 454.895 | 245.702 | 241.926 |
| TALCHER | 0.000 | 0.000 | 0.000 | 0.000 |
| RAJASTHAN SOLAR(BRPL)T-36 | 3.679 | 3.605 | 3.605 | 3.586 |
| RAJASTHAN SOLAR(BYPL)T-35 | 3.721 | 3.646 | 3.646 | 3.627 |
| RAJASTHAN SOLAR(TPDDL)T-31 | 3.574 | 3.502 | 3.502 | 3.483 |
| DVC | 232.451 | 230.680 | 230.680 | 229.480 |
| CHATTISHGARH | 0.000 | 0.000 | 0.000 | 0.000 |
| ADHPL (KULLU) | 5.531 | 5.447 | 5.447 | 5.420 |
| MEGHALAYA | 0.000 | 0.000 | 0.000 | 0.000 |
| MAHARASHTRA | 0.076 | 0.075 | 0.075 | 0.074 |
| ANDHRA PRADESH | 62.280 | 61.801 | 61.801 | 61.481 |
| MADHYA PRADESH | 108.761 | 107.591 | 107.591 | 107.033 |
| METHON POWER (NDPL)-LT-06 | 150.348 | 149.201 | 149.201 | 148.424 |
| DVC MEJIA (LT-08)(BYPL) | 39.299 | 39.018 | 39.018 | 38.803 |
| URS | 0.000 | 0.000 | 0.000 | 0.000 |
| JAMMU & KASHMIR | 67.235 | 66.550 | 66.550 | 66.205 |
| HIMACHAL PRADESH | 382.390 | 376.579 | 376.579 | 374.622 |
| JHARKHAND | 22.379 | 22.208 | 22.208 | 22.093 |
| MIZORAM | 6.502 | 6.386 | 6.386 | 6.353 |
| NAGALAND | 3.281 | 3.260 | 3.260 | 3.243 |
| DVC (FOR NDPL) LT-09 | 0.000 | 0.000 | 0.000 | 0.000 |
| HARYANA (LT -05) | 49.975 | 49.588 | 49.588 | 49.328 |
| SIKKIM | 0.000 | 0.000 | 0.000 | 0.000 |
| WEST BENGAL | 0.000 | 0.000 | 0.000 | 0.000 |
| ORISSA MT-20 JITPL -DVC | 4.400 | 4.348 | 4.348 | 4.325 |
| TAMILNAIDU | 0.000 | 0.000 | 0.000 | 0.000 |
| MANIPUR | 0.000 | 0.000 | 0.000 | 0.000 |
| POWER EXCHANGE(IEX) | 4.821 | 4.794 | 4.821 | 4.794 |
| POWER EXCHANGE(PX) | 0.000 | 0.000 | 0.000 | 0.000 |
| | | | | |
| TOTAL | 4128.295 | 4050.596 | 3302.387 | 3246.581 |

D) AGENCY WISE BREAKUP OF ENERGY SCHEDULED BY NRLDC FOR EXPORT TO OTHER UTILITIES FROM DTL

| NAME OF THE STATION | AVAILABILITY AT POWER PLANT | AVAILABILITY AT PERIPHERY | ALLOCATION MADE BY NRLDC AT POWER PLANT | ALLOCATION MADE BY NRLDC AT PERIPHERY |
|---|-----------------------------|---------------------------|---|---------------------------------------|
| TO JHARKHAND | 0.000 | 0.000 | 0.000 | 0.000 |
| TO ANDHRA | -8.845 | -8.955 | -8.955 | -9.048 |
| TO MADHYA PRADESH | -0.781 | -0.796 | -0.796 | -0.804 |
| TO WEST BENGAL | -0.647 | -0.652 | -0.652 | -0.659 |
| TO J&K | 0.000 | 0.000 | 0.000 | 0.000 |
| TO UTTAR PRADESH | 0.000 | 0.000 | 0.000 | 0.000 |
| TO TAMILNADU | 0.000 | 0.000 | 0.000 | 0.000 |
| TO GOA | 0.000 | 0.000 | 0.000 | 0.000 |
| TO MEGHALAYA | 0.000 | 0.000 | 0.000 | 0.000 |
| TO MANIPUR | 0.000 | 0.000 | 0.000 | 0.000 |
| BTPS TO MP | 0.000 | 0.000 | 0.000 | 0.000 |
| TO HIMACHAL PRADESH | 0.000 | 0.000 | 0.000 | 0.000 |
| TO HARYANA | 0.000 | 0.000 | 0.000 | 0.000 |
| TO POWER EXCHANGE (IEX) | -285.697 | -288.667 | -285.697 | -288.667 |
| TO POWER EXCHANGE (PX) | 0.000 | 0.000 | 0.000 | 0.000 |
| TO SHARE PROJECT (HARYANA) | -21.958 | -22.185 | -21.958 | -22.185 |
| TO SHARE PROJECT (PUNJAB) | -21.926 | -22.153 | -21.926 | -22.153 |
| TOTAL | -339.853 | -343.407 | -339.982 | -343.515 |
| | | | | |
| TOTAL SCHEDULED DRAWAL FROM THE GRID | 3788.442 | 3707.189 | 2962.404 | 2903.066 |

| | |
|---|--|
| TOTAL CONSUMPTION INCLUDING AUX. OF GENERATING STNs. EXCLUDING BTPS | 3552.608 |
| NET CONSUMPTION | 3532.162 |
| AVAILABILITY WITHIN DELHI | 657.316 |
| ACTUAL DRAWAL FROM THE GRID | 2874.846 |
| OVER DRAWAL(+)/UNDER DRAWAL(-) FROM THE GRID ON THE BASIS OF SCHEDULED ALLOCATION MADE BY NRLDC TO DELHI AT PERIPHERY | -28.220 |
| LOAD SHEDDING | 1.938 |
| UNRESTRICTED DEMAND (GROSS) | 3554.546 |
| UNRESTRICTED DEMAND (NET) | 3534.100 |
| MAX. NET CONSUMPTION | 125.273 ON 17.08.2018 |
| MAX. LOAD SHEDDING | 152MW ON 23.08.2018 AT 12.04HRS. |
| PEAK LOAD | Peak Demand during the month |
| DAY PEAK | 5844MW AT 15.16.43HRS ON 16.08.2018 |
| EVENING PEAK | 5937MW AT 22.46.00HRS ON 17.08.2018 |
| P.L.F. OF GENCO AND PRAGATI STNs. | RPH GT PRAGATI RITHALA BAWANA Timarpur Okhla EDWPCL DMSWL |
| | 0.00% 30.29% 46.27% 0.00% 25.04% 126.55% 26.33% 64.86% |

9 SHEDDING DETAILS DURING THE MONTH OF AUG 2018.

ALL FIGURES IN MUs

| DATE | No. of Under Freq. Relay Operated | Shedding due to under frequency relay operation in MUs | | | | | Shedding due to Grid Restrictions (Over drawl / low freq.) | | | | |
|--------------|-----------------------------------|--|--------------|--------------|--------------|--------------|--|--------------|--------------|--------------|--------------|
| | | BSES | | NDPL | NDMC | TOTAL | BSES | | NDPL | NDMC | MES |
| | | BYPL | BRPL | | | | BYPL | BRPL | | | |
| 1 | 2 | 3 | 4 | 5 | 6 | 7=3 to 6 | 8 | 9 | 10 | 11 | 12 |
| 01.Aug.18 | 0 | 0.000 | 0.000 | 0.000 | 0.000 | 0.000 | 0.000 | 0.000 | 0.000 | 0.000 | 0.000 |
| 02.Aug.18 | 0 | 0.000 | 0.000 | 0.000 | 0.000 | 0.000 | 0.000 | 0.000 | 0.000 | 0.000 | 0.000 |
| 03.Aug.18 | 0 | 0.000 | 0.000 | 0.000 | 0.000 | 0.000 | 0.000 | 0.000 | 0.000 | 0.000 | 0.000 |
| 04.Aug.18 | 0 | 0.000 | 0.000 | 0.000 | 0.000 | 0.000 | 0.000 | 0.000 | 0.000 | 0.000 | 0.000 |
| 05.Aug.18 | 0 | 0.000 | 0.000 | 0.000 | 0.000 | 0.000 | 0.000 | 0.000 | 0.000 | 0.000 | 0.000 |
| 06.Aug.18 | 0 | 0.000 | 0.000 | 0.000 | 0.000 | 0.000 | 0.000 | 0.000 | 0.000 | 0.000 | 0.000 |
| 07.Aug.18 | 0 | 0.000 | 0.000 | 0.000 | 0.000 | 0.000 | 0.000 | 0.000 | 0.000 | 0.000 | 0.000 |
| 08.Aug.18 | 0 | 0.000 | 0.000 | 0.000 | 0.000 | 0.000 | 0.000 | 0.000 | 0.000 | 0.000 | 0.000 |
| 09.Aug.18 | 0 | 0.000 | 0.000 | 0.000 | 0.000 | 0.000 | 0.000 | 0.000 | 0.000 | 0.000 | 0.000 |
| 10.Aug.18 | 0 | 0.000 | 0.000 | 0.000 | 0.000 | 0.000 | 0.000 | 0.000 | 0.000 | 0.000 | 0.000 |
| 11.Aug.18 | 0 | 0.000 | 0.000 | 0.000 | 0.000 | 0.000 | 0.000 | 0.000 | 0.000 | 0.000 | 0.000 |
| 12.Aug.18 | 0 | 0.000 | 0.000 | 0.000 | 0.000 | 0.000 | 0.000 | 0.000 | 0.000 | 0.000 | 0.000 |
| 13.Aug.18 | 0 | 0.000 | 0.000 | 0.000 | 0.000 | 0.000 | 0.000 | 0.000 | 0.000 | 0.000 | 0.000 |
| 14.Aug.18 | 0 | 0.000 | 0.000 | 0.000 | 0.000 | 0.000 | 0.000 | 0.000 | 0.000 | 0.000 | 0.000 |
| 15.Aug.18 | 0 | 0.000 | 0.000 | 0.000 | 0.000 | 0.000 | 0.000 | 0.000 | 0.000 | 0.000 | 0.000 |
| 16.Aug.18 | 0 | 0.000 | 0.000 | 0.000 | 0.000 | 0.000 | 0.000 | 0.000 | 0.000 | 0.000 | 0.000 |
| 17.Aug.18 | 0 | 0.000 | 0.000 | 0.000 | 0.000 | 0.000 | 0.000 | 0.000 | 0.000 | 0.000 | 0.000 |
| 18.Aug.18 | 0 | 0.000 | 0.000 | 0.000 | 0.000 | 0.000 | 0.000 | 0.000 | 0.000 | 0.000 | 0.000 |
| 19.Aug.18 | 0 | 0.000 | 0.000 | 0.000 | 0.000 | 0.000 | 0.000 | 0.000 | 0.000 | 0.000 | 0.000 |
| 20.Aug.18 | 0 | 0.000 | 0.000 | 0.000 | 0.000 | 0.000 | 0.000 | 0.000 | 0.000 | 0.000 | 0.000 |
| 21.Aug.18 | 0 | 0.000 | 0.000 | 0.000 | 0.000 | 0.000 | 0.000 | 0.000 | 0.000 | 0.000 | 0.000 |
| 22.Aug.18 | 0 | 0.000 | 0.000 | 0.000 | 0.000 | 0.000 | 0.000 | 0.000 | 0.000 | 0.000 | 0.000 |
| 23.Aug.18 | 0 | 0.000 | 0.000 | 0.000 | 0.000 | 0.000 | 0.000 | 0.000 | 0.000 | 0.000 | 0.000 |
| 24.Aug.18 | 0 | 0.000 | 0.000 | 0.000 | 0.000 | 0.000 | 0.000 | 0.000 | 0.000 | 0.000 | 0.000 |
| 25.Aug.18 | 0 | 0.000 | 0.000 | 0.0001 | 0.000 | 0.000 | 0.000 | 0.000 | 0.000 | 0.000 | 0.000 |
| 26.Aug.18 | 0 | 0.000 | 0.000 | 0.000 | 0.000 | 0.000 | 0.000 | 0.000 | 0.000 | 0.000 | 0.000 |
| 27.Aug.18 | 0 | 0.000 | 0.000 | 0.000 | 0.000 | 0.000 | 0.000 | 0.000 | 0.000 | 0.000 | 0.000 |
| 28.Aug.18 | 0 | 0.000 | 0.000 | 0.000 | 0.000 | 0.000 | 0.000 | 0.000 | 0.000 | 0.000 | 0.000 |
| 29.Aug.18 | 0 | 0.000 | 0.000 | 0.000 | 0.000 | 0.000 | 0.000 | 0.000 | 0.000 | 0.000 | 0.000 |
| 30.Aug.18 | 0 | 0.000 | 0.000 | 0.000 | 0.000 | 0.000 | 0.000 | 0.000 | 0.000 | 0.000 | 0.000 |
| 31.Aug.18 | 0 | 0.000 | 0.000 | 0.000 | 0.000 | 0.000 | 0.000 | 0.000 | 0.000 | 0.000 | 0.000 |
| TOTAL | 0 | 0.000 | 0.000 | 0.000 | 0.000 | 0.000 | 0.000 | 0.000 | 0.000 | 0.000 | 0.000 |

ALL FIGURES IN MU_s

| Date | Shedding due to Transmission/Grid Constraints in Central Sector Stations / TTC / ATC VOILATION | | | | DUE TO NEW GRID CODE REGULATION DEVIATION | | | Shedding due to Transmission/Grid Constraints in Central sector stations | | | | Total | Total shedding due to grid restrictions |
|--------------|--|--------------|--------------|--------------|---|--------------|--------------|--|--------------|--------------|--------------|--------------|---|
| | BSES | | NDPL | NDMC | BSES | | TPDDL | BSES | | TPDDL | NDMC | | |
| | BYPL | BRPL | | | BYPL | BRPL | | BYPL | BRPL | | | | |
| | 13 | 14 | 15 | 16 | 17 | 18 | 19 | 20 | 21 | 22 | 23 | 24=8 to 23 | 25=7+24 |
| 01.Aug.18 | 0.000 | 0.000 | 0.000 | 0.000 | 0.000 | 0.000 | 0.000 | 0.000 | 0.000 | 0.000 | 0.000 | 0.000 | 0.000 |
| 02.Aug.18 | 0.000 | 0.000 | 0.000 | 0.000 | 0.000 | 0.000 | 0.000 | 0.000 | 0.000 | 0.000 | 0.000 | 0.000 | 0.000 |
| 03.Aug.18 | 0.000 | 0.000 | 0.000 | 0.000 | 0.000 | 0.000 | 0.000 | 0.000 | 0.000 | 0.000 | 0.000 | 0.000 | 0.000 |
| 04.Aug.18 | 0.000 | 0.000 | 0.000 | 0.000 | 0.000 | 0.000 | 0.000 | 0.000 | 0.000 | 0.000 | 0.000 | 0.000 | 0.000 |
| 05.Aug.18 | 0.000 | 0.000 | 0.000 | 0.000 | 0.000 | 0.000 | 0.000 | 0.000 | 0.000 | 0.000 | 0.000 | 0.000 | 0.000 |
| 06.Aug.18 | 0.000 | 0.000 | 0.000 | 0.000 | 0.000 | 0.000 | 0.000 | 0.000 | 0.000 | 0.000 | 0.000 | 0.000 | 0.000 |
| 07.Aug.18 | 0.000 | 0.000 | 0.000 | 0.000 | 0.000 | 0.000 | 0.000 | 0.000 | 0.000 | 0.000 | 0.000 | 0.000 | 0.000 |
| 08.Aug.18 | 0.000 | 0.000 | 0.000 | 0.000 | 0.000 | 0.000 | 0.000 | 0.000 | 0.000 | 0.000 | 0.000 | 0.000 | 0.000 |
| 09.Aug.18 | 0.000 | 0.000 | 0.000 | 0.000 | 0.000 | 0.000 | 0.000 | 0.000 | 0.000 | 0.000 | 0.000 | 0.000 | 0.000 |
| 10.Aug.18 | 0.000 | 0.000 | 0.000 | 0.000 | 0.000 | 0.000 | 0.000 | 0.000 | 0.000 | 0.000 | 0.000 | 0.000 | 0.000 |
| 11.Aug.18 | 0.000 | 0.000 | 0.000 | 0.000 | 0.000 | 0.000 | 0.000 | 0.000 | 0.000 | 0.000 | 0.000 | 0.000 | 0.000 |
| 12.Aug.18 | 0.000 | 0.000 | 0.000 | 0.000 | 0.000 | 0.000 | 0.000 | 0.000 | 0.000 | 0.000 | 0.000 | 0.000 | 0.000 |
| 13.Aug.18 | 0.000 | 0.000 | 0.000 | 0.000 | 0.000 | 0.000 | 0.000 | 0.000 | 0.000 | 0.000 | 0.000 | 0.000 | 0.000 |
| 14.Aug.18 | 0.000 | 0.000 | 0.000 | 0.000 | 0.000 | 0.000 | 0.000 | 0.000 | 0.000 | 0.000 | 0.000 | 0.000 | 0.000 |
| 15.Aug.18 | 0.000 | 0.000 | 0.000 | 0.000 | 0.000 | 0.000 | 0.000 | 0.000 | 0.000 | 0.000 | 0.000 | 0.000 | 0.000 |
| 16.Aug.18 | 0.000 | 0.000 | 0.000 | 0.000 | 0.000 | 0.000 | 0.000 | 0.000 | 0.000 | 0.000 | 0.000 | 0.000 | 0.000 |
| 17.Aug.18 | 0.000 | 0.000 | 0.000 | 0.000 | 0.000 | 0.000 | 0.000 | 0.000 | 0.000 | 0.000 | 0.000 | 0.000 | 0.000 |
| 18.Aug.18 | 0.000 | 0.000 | 0.000 | 0.000 | 0.000 | 0.000 | 0.000 | 0.000 | 0.000 | 0.000 | 0.000 | 0.000 | 0.000 |
| 19.Aug.18 | 0.000 | 0.000 | 0.000 | 0.000 | 0.000 | 0.000 | 0.000 | 0.000 | 0.000 | 0.000 | 0.000 | 0.000 | 0.000 |
| 20.Aug.18 | 0.000 | 0.000 | 0.000 | 0.000 | 0.000 | 0.000 | 0.000 | 0.000 | 0.000 | 0.000 | 0.000 | 0.000 | 0.000 |
| 21.Aug.18 | 0.000 | 0.000 | 0.000 | 0.000 | 0.000 | 0.000 | 0.000 | 0.000 | 0.000 | 0.000 | 0.000 | 0.000 | 0.000 |
| 22.Aug.18 | 0.000 | 0.000 | 0.000 | 0.000 | 0.000 | 0.000 | 0.000 | 0.000 | 0.000 | 0.000 | 0.000 | 0.000 | 0.000 |
| 23.Aug.18 | 0.000 | 0.000 | 0.000 | 0.000 | 0.000 | 0.000 | 0.000 | 0.000 | 0.000 | 0.000 | 0.000 | 0.000 | 0.000 |
| 24.Aug.18 | 0.000 | 0.000 | 0.000 | 0.000 | 0.000 | 0.000 | 0.000 | 0.000 | 0.000 | 0.000 | 0.000 | 0.000 | 0.000 |
| 25.Aug.18 | 0.000 | 0.000 | 0.000 | 0.000 | 0.000 | 0.000 | 0.000 | 0.000 | 0.000 | 0.000 | 0.000 | 0.000 | 0.000 |
| 26.Aug.18 | 0.000 | 0.000 | 0.000 | 0.000 | 0.000 | 0.000 | 0.000 | 0.000 | 0.000 | 0.000 | 0.000 | 0.000 | 0.000 |
| 27.Aug.18 | 0.000 | 0.000 | 0.000 | 0.000 | 0.000 | 0.000 | 0.000 | 0.000 | 0.000 | 0.000 | 0.000 | 0.000 | 0.000 |
| 28.Aug.18 | 0.000 | 0.000 | 0.000 | 0.000 | 0.000 | 0.000 | 0.000 | 0.000 | 0.000 | 0.000 | 0.000 | 0.000 | 0.000 |
| 29.Aug.18 | 0.000 | 0.000 | 0.000 | 0.000 | 0.000 | 0.000 | 0.000 | 0.000 | 0.000 | 0.000 | 0.000 | 0.000 | 0.000 |
| 30.Aug.18 | 0.000 | 0.000 | 0.000 | 0.000 | 0.000 | 0.000 | 0.000 | 0.000 | 0.000 | 0.000 | 0.000 | 0.000 | 0.000 |
| 31.Aug.18 | 0.000 | 0.000 | 0.000 | 0.000 | 0.000 | 0.000 | 0.000 | 0.000 | 0.000 | 0.000 | 0.000 | 0.000 | 0.000 |
| TOTAL | 0.000 | 0.000 | 0.000 | 0.000 | 0.000 | 0.000 | 0.000 | 0.000 | 0.000 | 0.000 | 0.000 | 0.000 | 0.000 |

ALL FIGURES IN MUs

| Date | DUE TO T&D CONSTRAINTS IN DELHI SYSTEM | | | | | | | | |
|--------------|--|--------------|--------------|--------------|--------------|--------------|--------------|--------------|--------------|
| | DTL | | | | | DISCOMS | | | |
| | BSES | | NDPL | NDMC | MES | BSES | | NDPL | NDMC |
| | BYPL | BRPL | | | | BYPL | BRPL | | |
| 26 | 27 | 28 | 29 | 30 | 31 | 32 | 33 | 34 | |
| 01.Aug.18 | 0.000 | 0.011 | 0.000 | 0.000 | 0.000 | 0.000 | 0.017 | 0.010 | 0.000 |
| 02.Aug.18 | 0.000 | 0.010 | 0.000 | 0.000 | 0.000 | 0.000 | 0.027 | 0.000 | 0.000 |
| 03.Aug.18 | 0.000 | 0.000 | 0.006 | 0.000 | 0.000 | 0.000 | 0.010 | 0.000 | 0.000 |
| 04.Aug.18 | 0.001 | 0.000 | 0.004 | 0.000 | 0.000 | 0.000 | 0.034 | 0.033 | 0.000 |
| 05.Aug.18 | 0.000 | 0.064 | 0.000 | 0.000 | 0.000 | 0.000 | 0.013 | 0.001 | 0.000 |
| 06.Aug.18 | 0.000 | 0.000 | 0.001 | 0.000 | 0.000 | 0.000 | 0.039 | 0.000 | 0.000 |
| 07.Aug.18 | 0.000 | 0.007 | 0.000 | 0.000 | 0.000 | 0.000 | 0.050 | 0.000 | 0.000 |
| 08.Aug.18 | 0.001 | 0.000 | 0.032 | 0.000 | 0.000 | 0.000 | 0.140 | 0.011 | 0.000 |
| 09.Aug.18 | 0.000 | 0.000 | 0.000 | 0.000 | 0.000 | 0.000 | 0.000 | 0.000 | 0.000 |
| 10.Aug.18 | 0.003 | 0.000 | 0.000 | 0.000 | 0.000 | 0.000 | 0.020 | 0.009 | 0.000 |
| 11.Aug.18 | 0.000 | 0.000 | 0.010 | 0.000 | 0.000 | 0.000 | 0.055 | 0.002 | 0.000 |
| 12.Aug.18 | 0.003 | 0.006 | 0.006 | 0.000 | 0.000 | 0.008 | 0.047 | 0.001 | 0.000 |
| 13.Aug.18 | 0.000 | 0.000 | 0.000 | 0.000 | 0.000 | 0.000 | 0.061 | 0.002 | 0.000 |
| 14.Aug.18 | 0.009 | 0.000 | 0.006 | 0.000 | 0.000 | 0.000 | 0.050 | 0.002 | 0.000 |
| 15.Aug.18 | 0.001 | 0.002 | 0.023 | 0.000 | 0.000 | 0.000 | 0.070 | 0.010 | 0.000 |
| 16.Aug.18 | 0.000 | 0.000 | 0.000 | 0.000 | 0.000 | 0.000 | 0.016 | 0.002 | 0.000 |
| 17.Aug.18 | 0.004 | 0.000 | 0.000 | 0.000 | 0.000 | 0.000 | 0.006 | 0.000 | 0.000 |
| 18.Aug.18 | 0.033 | 0.000 | 0.000 | 0.000 | 0.000 | 0.000 | 0.166 | 0.015 | 0.000 |
| 19.Aug.18 | 0.000 | 0.000 | 0.000 | 0.000 | 0.000 | 0.004 | 0.083 | 0.000 | 0.000 |
| 20.Aug.18 | 0.000 | 0.002 | 0.000 | 0.000 | 0.000 | 0.000 | 0.034 | 0.006 | 0.000 |
| 21.Aug.18 | 0.007 | 0.000 | 0.000 | 0.000 | 0.000 | 0.000 | 0.037 | 0.004 | 0.000 |
| 22.Aug.18 | 0.000 | 0.000 | 0.000 | 0.000 | 0.000 | 0.000 | 0.005 | 0.000 | 0.000 |
| 23.Aug.18 | 0.000 | 0.000 | 0.010 | 0.000 | 0.000 | 0.022 | 0.049 | 0.004 | 0.000 |
| 24.Aug.18 | 0.000 | 0.000 | 0.000 | 0.000 | 0.000 | 0.001 | 0.029 | 0.011 | 0.000 |
| 25.Aug.18 | 0.000 | 0.013 | 0.000 | 0.000 | 0.000 | 0.001 | 0.000 | 0.001 | 0.000 |
| 26.Aug.18 | 0.000 | 0.000 | 0.000 | 0.000 | 0.000 | 0.000 | 0.015 | 0.007 | 0.000 |
| 27.Aug.18 | 0.004 | 0.000 | 0.000 | 0.000 | 0.000 | 0.007 | 0.067 | 0.000 | 0.000 |
| 28.Aug.18 | 0.000 | 0.000 | 0.000 | 0.000 | 0.000 | 0.000 | 0.164 | 0.029 | 0.000 |
| 29.Aug.18 | 0.000 | 0.050 | 0.000 | 0.000 | 0.000 | 0.000 | 0.023 | 0.006 | 0.000 |
| 30.Aug.18 | 0.000 | 0.000 | 0.007 | 0.000 | 0.000 | 0.006 | 0.012 | 0.000 | 0.000 |
| 31.Aug.18 | 0.000 | 0.001 | 0.000 | 0.000 | 0.000 | 0.000 | 0.014 | 0.012 | 0.000 |
| TOTAL | 0.066 | 0.166 | 0.105 | 0.000 | 0.000 | 0.049 | 1.353 | 0.178 | 0.000 |

ALL FIGURES IN MUs

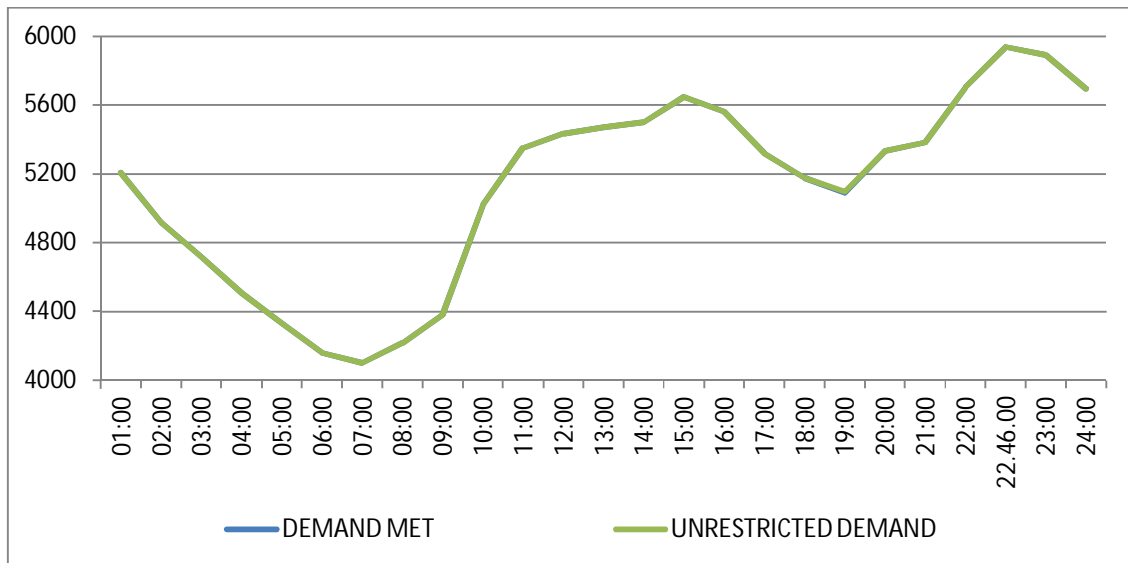
| DATE | OTHER AGENCIES LIKE GENCO, BBMB, BTPS ETC. | | | | THEFT PRONE SHEDDING | | | TOTAL SHEDDING DUE TO T&D CONSTS. & THEFT PRONE | GRAND TOTAL |
|--------------|---|--------------|--------------|--------------|----------------------|--------------|--------------|---|----------------|
| | BSES | | NDPL | NDMC | BSES | | NDPL | | |
| | BYPL | BRPL | | | BYPL | BRPL | | | |
| 1 | 35 | 36 | 37 | 38 | 39 | 40 | 41 | 42= 26 to 41 | 43 = 25 + 42 |
| 01.Aug.18 | 0.000 | 0.000 | 0.000 | 0.000 | 0.000 | 0.000 | 0.000 | 0.038 | 0.038 |
| 02.Aug.18 | 0.000 | 0.000 | 0.000 | 0.000 | 0.000 | 0.000 | 0.000 | 0.037 | 0.037 |
| 03.Aug.18 | 0.000 | 0.000 | 0.000 | 0.000 | 0.000 | 0.000 | 0.000 | 0.016 | 0.016 |
| 04.Aug.18 | 0.000 | 0.000 | 0.000 | 0.000 | 0.000 | 0.000 | 0.000 | 0.072 | 0.072 |
| 05.Aug.18 | 0.000 | 0.000 | 0.000 | 0.000 | 0.000 | 0.000 | 0.000 | 0.078 | 0.078 |
| 06.Aug.18 | 0.000 | 0.000 | 0.000 | 0.000 | 0.000 | 0.000 | 0.000 | 0.040 | 0.040 |
| 07.Aug.18 | 0.000 | 0.000 | 0.000 | 0.000 | 0.000 | 0.000 | 0.000 | 0.057 | 0.057 |
| 08.Aug.18 | 0.000 | 0.000 | 0.000 | 0.000 | 0.000 | 0.000 | 0.000 | 0.184 | 0.184 |
| 09.Aug.18 | 0.000 | 0.000 | 0.000 | 0.000 | 0.000 | 0.000 | 0.000 | 0.000 | 0.000 |
| 10.Aug.18 | 0.000 | 0.000 | 0.000 | 0.000 | 0.000 | 0.000 | 0.000 | 0.032 | 0.032 |
| 11.Aug.18 | 0.000 | 0.000 | 0.000 | 0.000 | 0.000 | 0.000 | 0.000 | 0.067 | 0.067 |
| 12.Aug.18 | 0.000 | 0.000 | 0.000 | 0.000 | 0.000 | 0.000 | 0.000 | 0.071 | 0.071 |
| 13.Aug.18 | 0.000 | 0.000 | 0.000 | 0.000 | 0.000 | 0.000 | 0.000 | 0.063 | 0.063 |
| 14.Aug.18 | 0.000 | 0.000 | 0.000 | 0.000 | 0.000 | 0.000 | 0.000 | 0.067 | 0.067 |
| 15.Aug.18 | 0.000 | 0.000 | 0.000 | 0.000 | 0.000 | 0.000 | 0.000 | 0.106 | 0.106 |
| 16.Aug.18 | 0.000 | 0.000 | 0.000 | 0.000 | 0.000 | 0.000 | 0.000 | 0.018 | 0.018 |
| 17.Aug.18 | 0.000 | 0.000 | 0.000 | 0.000 | 0.000 | 0.000 | 0.000 | 0.010 | 0.010 |
| 18.Aug.18 | 0.000 | 0.000 | 0.000 | 0.000 | 0.000 | 0.000 | 0.000 | 0.214 | 0.214 |
| 19.Aug.18 | 0.000 | 0.000 | 0.000 | 0.000 | 0.000 | 0.000 | 0.000 | 0.087 | 0.087 |
| 20.Aug.18 | 0.000 | 0.000 | 0.000 | 0.000 | 0.000 | 0.000 | 0.000 | 0.042 | 0.042 |
| 21.Aug.18 | 0.000 | 0.000 | 0.000 | 0.000 | 0.000 | 0.000 | 0.000 | 0.048 | 0.048 |
| 22.Aug.18 | 0.000 | 0.000 | 0.000 | 0.000 | 0.000 | 0.000 | 0.000 | 0.005 | 0.005 |
| 23.Aug.18 | 0.000 | 0.000 | 0.000 | 0.000 | 0.000 | 0.000 | 0.000 | 0.085 | 0.085 |
| 24.Aug.18 | 0.000 | 0.000 | 0.000 | 0.000 | 0.000 | 0.000 | 0.000 | 0.041 | 0.041 |
| 25.Aug.18 | 0.000 | 0.000 | 0.000 | 0.000 | 0.000 | 0.000 | 0.000 | 0.015 | 0.015 |
| 26.Aug.18 | 0.000 | 0.000 | 0.000 | 0.000 | 0.000 | 0.000 | 0.000 | 0.022 | 0.022 |
| 27.Aug.18 | 0.000 | 0.000 | 0.000 | 0.000 | 0.000 | 0.000 | 0.000 | 0.078 | 0.078 |
| 28.Aug.18 | 0.000 | 0.000 | 0.000 | 0.000 | 0.000 | 0.000 | 0.000 | 0.193 | 0.193 |
| 29.Aug.18 | 0.000 | 0.000 | 0.000 | 0.000 | 0.000 | 0.000 | 0.000 | 0.079 | 0.079 |
| 30.Aug.18 | 0.000 | 0.000 | 0.000 | 0.000 | 0.000 | 0.000 | 0.000 | 0.025 | 0.025 |
| 31.Aug.18 | 0.000 | 0.007 | 0.014 | 0.000 | 0.000 | 0.000 | 0.000 | 0.048 | 0.048 |
| TOTAL | 0.000 | 0.007 | 0.014 | 0.000 | 0.000 | 0.000 | 0.000 | 1.938 | 1.938 |

| DATE | (NET CONSUMPTION) | MAXI. DEMAND MET DURING THE DAY | TIME OF OCCUR- RENCE OF MAX DEMAND | SHEDDING AT THIS TIME | UN-REST- RICTED DEMAND | MAXIMUM UN-REST- RICTED DEMAND DURING THE DAY | TIME OF MAX. UN-REST. DEMAND | DEMAND AT THAT TIME | SHEDDING AT THAT TIME |
|--------------|----------------------|---|--|-----------------------------|------------------------------|--|---------------------------------------|---------------------------|-----------------------------|
| | In Mus. | | | | | | | | |
| 1 | 32 | 33 | 34 | 35 | 36=33+35 | 37=39+40 | 38 | 39 | 40 |
| 01.Aug.18 | 114.863 | 5786 | 23:02:10 | 0 | 5786 | 5786 | 23:02:10 | 5786 | 0 |
| 02.Aug.18 | 119.169 | 5929 | 22:54:44 | 0 | 5929 | 5929 | 22:54:44 | 5929 | 0 |
| 03.Aug.18 | 118.360 | 5662 | 00:01:05 | 0 | 5662 | 5662 | 00:01:05 | 5662 | 0 |
| 04.Aug.18 | 113.630 | 5670 | 23:20:32 | 0 | 5670 | 5670 | 23:20:32 | 5670 | 0 |
| 05.Aug.18 | 107.798 | 5520 | 00:00:12 | 0 | 5520 | 5520 | 00:00:12 | 5520 | 0 |
| 06.Aug.18 | 107.840 | 5054 | 00:00:10 | 0 | 5054 | 5054 | 00:00:10 | 5054 | 0 |
| 07.Aug.18 | 106.397 | 5137 | 15:14:28 | 0 | 5137 | 5137 | 15:14:28 | 5137 | 0 |
| 08.Aug.18 | 110.479 | 5358 | 22:59:49 | 0 | 5358 | 5358 | 22:59:49 | 5358 | 0 |
| 09.Aug.18 | 118.054 | 5853 | 22:55:04 | 0 | 5853 | 5853 | 22:55:04 | 5853 | 0 |
| 10.Aug.18 | 122.278 | 5753 | 22:57:56 | 0 | 5753 | 5753 | 22:57:56 | 5753 | 0 |
| 11.Aug.18 | 117.160 | 5775 | 23:00:35 | 0 | 5775 | 5775 | 23:00:35 | 5775 | 0 |
| 12.Aug.18 | 110.745 | 5613 | 00:00:46 | 7 | 5620 | 5613 | 00:00:46 | 5613 | 0 |
| 13.Aug.18 | 116.634 | 5665 | 23:08:48 | 0 | 5665 | 5672 | 23:08:48 | 5665 | 7 |
| 14.Aug.18 | 119.888 | 5814 | 23:02:26 | 11 | 5825 | 5814 | 23:02:26 | 5814 | 0 |
| 15.Aug.18 | 103.122 | 5669 | 00:00:22 | 0 | 5669 | 5680 | 00:00:22 | 5669 | 11 |
| 16.Aug.18 | 119.499 | 5844 | 15:16:43 | 0 | 5844 | 5844 | 15:16:43 | 5844 | 0 |
| 17.Aug.18 | 125.273 | 5937 | 22:46:00 | 0 | 5937 | 5937 | 22:46:00 | 5937 | 0 |
| 18.Aug.18 | 120.518 | 5758 | 15:29:06 | 0 | 5758 | 5758 | 15:29:06 | 5758 | 0 |
| 19.Aug.18 | 109.848 | 5367 | 23:03:12 | 0 | 5367 | 5367 | 23:03:12 | 5367 | 0 |
| 20.Aug.18 | 119.909 | 5829 | 15:29:31 | 5 | 5834 | 5829 | 15:29:31 | 5829 | 0 |
| 21.Aug.18 | 120.410 | 5880 | 22:57:39 | 21 | 5901 | 5885 | 22:57:39 | 5880 | 5 |
| 22.Aug.18 | 117.368 | 5689 | 00:01 | 0 | 5689 | 5710 | 00:01 | 5689 | 21 |
| 23.Aug.18 | 114.506 | 5430 | 23:00:28 | 0 | 5430 | 5430 | 23:00:28 | 5430 | 0 |
| 24.Aug.18 | 115.067 | 5480 | 22:59:07 | 0 | 5480 | 5480 | 22:59:07 | 5480 | 0 |
| 25.Aug.18 | 108.247 | 5287 | 00:00:25 | 0 | 5287 | 5287 | 00:00:25 | 5287 | 0 |
| 26.Aug.18 | 99.875 | 5203 | 23:10:59 | 0 | 5203 | 5203 | 23:10:59 | 5203 | 0 |
| 27.Aug.18 | 111.890 | 5410 | 22:51:23 | 0 | 5410 | 5410 | 22:51:23 | 5410 | 0 |
| 28.Aug.18 | 107.824 | 5184 | 15:21:01 | 6 | 5190 | 5190 | 15:21:01 | 5184 | 6 |
| 29.Aug.18 | 106.733 | 5130 | 16:44:14 | 0 | 5130 | 5130 | 16:44:14 | 5130 | 0 |
| 30.Aug.18 | 114.369 | 5563 | 22:43:18 | 0 | 5563 | 5563 | 22:43:18 | 5563 | 0 |
| 31.Aug.18 | 114.409 | 5577 | 22:57:59 | 0 | 5577 | 5577 | 22:57:59 | 5577 | 0 |
| TOTAL | 3532.162 | 5937 17.08.18 | 22:46:00 | 0 | 5937 17.08.18 | 5937 | 22:46:00 | 5937 | 0 |

10 **LOAD PATTERN OF DELHI ON THE DAY OF PEAK DEMAND MET DURING AUG 2018 ON 17.08.2018- 5937MW AT 22.46.00HRS.**

All figures in MW

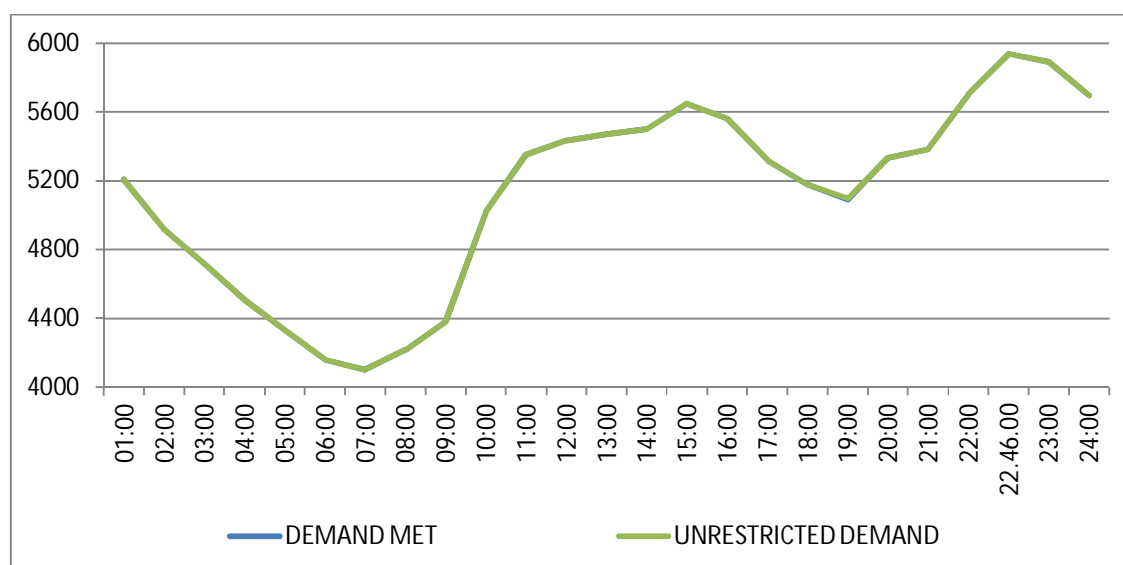
| Hrs. | Demand | Load Shedding | Un-Restricted Demand |
|-----------------------|----------------|---------------|----------------------|
| 01:00 | 5206 | 0 | 5206 |
| 02:00 | 4917 | 0 | 4917 |
| 03:00 | 4718 | 0 | 4718 |
| 04:00 | 4507 | 0 | 4507 |
| 05:00 | 4331 | 0 | 4331 |
| 06:00 | 4160 | 0 | 4160 |
| 07:00 | 4100 | 0 | 4100 |
| 08:00 | 4215 | 0 | 4215 |
| 09:00 | 4381 | 0 | 4381 |
| 10:00 | 5021 | 0 | 5021 |
| 11:00 | 5352 | 0 | 5352 |
| 12:00 | 5435 | 0 | 5435 |
| 13:00 | 5469 | 0 | 5469 |
| 14:00 | 5501 | 0 | 5501 |
| 15:00 | 5647 | 0 | 5647 |
| 16:00 | 5559 | 0 | 5559 |
| 17:00 | 5319 | 0 | 5319 |
| 18:00 | 5176 | 0 | 5176 |
| 19:00 | 5089 | 7 | 5096 |
| 20:00 | 5333 | 0 | 5333 |
| 21:00 | 5384 | 0 | 5384 |
| 22:00 | 5702 | 0 | 5702 |
| 22.46.00 | 5937 | 0 | 5937 |
| 23:00 | 5890 | 0 | 5890 |
| 24:00 | 5695 | 0 | 5695 |
| Total (IN MUS) | 125.273 | 0.010 | 125.283 |



11 LOAD PATTERN OF DELHI ON THE DAY OF MAXIMUM UN-RESTRICTED DEMAND DURING AUG 2018 ON 17.08.2018-5937MW AT 22.46.00HRS.

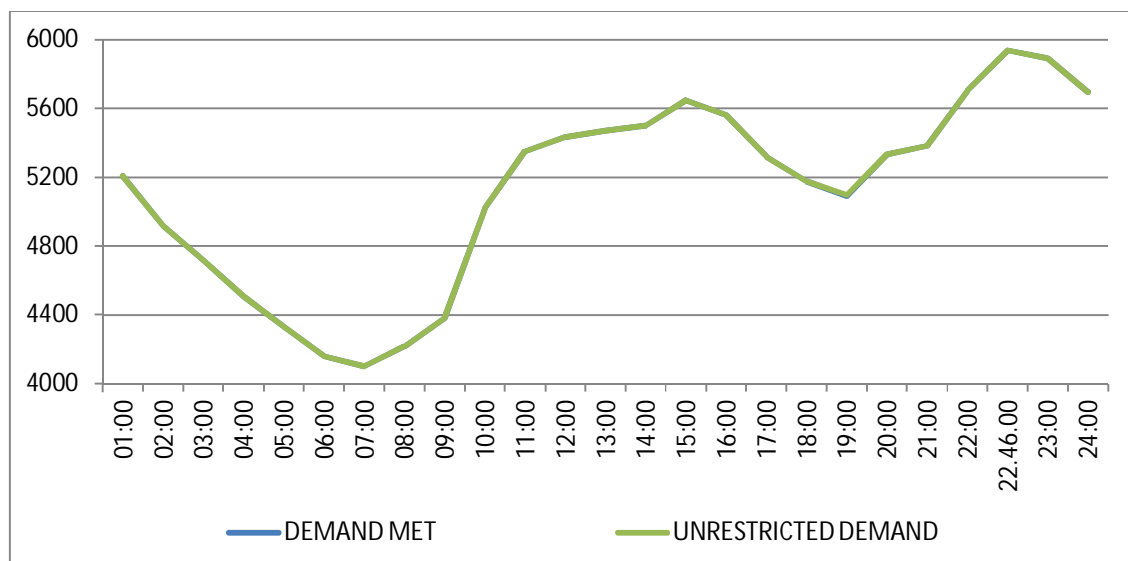
All figures in MW

| Hrs. | Demand | Load Shedding | Un-Restricted Demand |
|-----------------------|----------------|---------------|----------------------|
| 01:00 | 5206 | 0 | 5206 |
| 02:00 | 4917 | 0 | 4917 |
| 03:00 | 4718 | 0 | 4718 |
| 04:00 | 4507 | 0 | 4507 |
| 05:00 | 4331 | 0 | 4331 |
| 06:00 | 4160 | 0 | 4160 |
| 07:00 | 4100 | 0 | 4100 |
| 08:00 | 4215 | 0 | 4215 |
| 09:00 | 4381 | 0 | 4381 |
| 10:00 | 5021 | 0 | 5021 |
| 11:00 | 5352 | 0 | 5352 |
| 12:00 | 5435 | 0 | 5435 |
| 13:00 | 5469 | 0 | 5469 |
| 14:00 | 5501 | 0 | 5501 |
| 15:00 | 5647 | 0 | 5647 |
| 16:00 | 5559 | 0 | 5559 |
| 17:00 | 5319 | 0 | 5319 |
| 18:00 | 5176 | 0 | 5176 |
| 19:00 | 5089 | 7 | 5096 |
| 20:00 | 5333 | 0 | 5333 |
| 21:00 | 5384 | 0 | 5384 |
| 22:00 | 5702 | 0 | 5702 |
| 22.46.00 | 5937 | 0 | 5937 |
| 23:00 | 5890 | 0 | 5890 |
| 24:00 | 5695 | 0 | 5695 |
| Total (IN MUS) | 125.273 | 0.010 | 125.283 |



**12 LOAD PATTERN OF DELHI ON THE DAY OF MAXIMUM ENERGY CONSUMED
DURING AUG 2018 – 17.08.2018 – 125.273Mus** All figures in MW

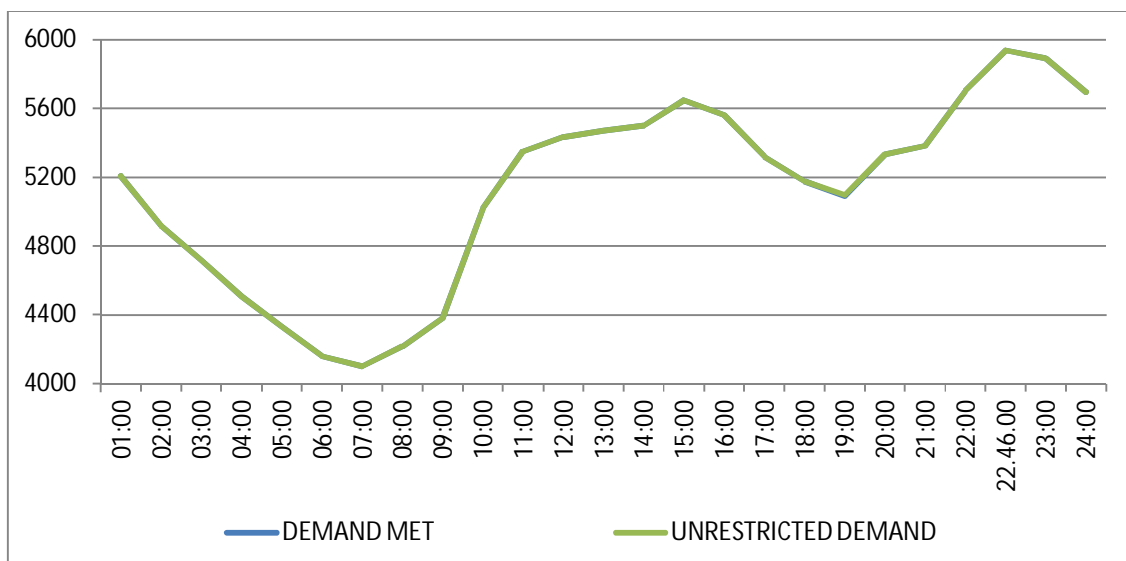
| Hrs. | Demand | Load Shedding | Un-Restricted Demand |
|-----------------------|----------------|---------------|----------------------|
| 01:00 | 5206 | 0 | 5206 |
| 02:00 | 4917 | 0 | 4917 |
| 03:00 | 4718 | 0 | 4718 |
| 04:00 | 4507 | 0 | 4507 |
| 05:00 | 4331 | 0 | 4331 |
| 06:00 | 4160 | 0 | 4160 |
| 07:00 | 4100 | 0 | 4100 |
| 08:00 | 4215 | 0 | 4215 |
| 09:00 | 4381 | 0 | 4381 |
| 10:00 | 5021 | 0 | 5021 |
| 11:00 | 5352 | 0 | 5352 |
| 12:00 | 5435 | 0 | 5435 |
| 13:00 | 5469 | 0 | 5469 |
| 14:00 | 5501 | 0 | 5501 |
| 15:00 | 5647 | 0 | 5647 |
| 16:00 | 5559 | 0 | 5559 |
| 17:00 | 5319 | 0 | 5319 |
| 18:00 | 5176 | 0 | 5176 |
| 19:00 | 5089 | 7 | 5096 |
| 20:00 | 5333 | 0 | 5333 |
| 21:00 | 5384 | 0 | 5384 |
| 22:00 | 5702 | 0 | 5702 |
| 22.46.00 | 5937 | 0 | 5937 |
| 23:00 | 5890 | 0 | 5890 |
| 24:00 | 5695 | 0 | 5695 |
| Total (IN MUS) | 125.273 | 0.010 | 125.283 |



13 LOAD PATTERN OF DELHI ON THE DAY OF MAXIMUM UNRESTRICTED ENERGY DEMAND DURING AUG 2018 – 17.08.2018 – 125.283 Mus

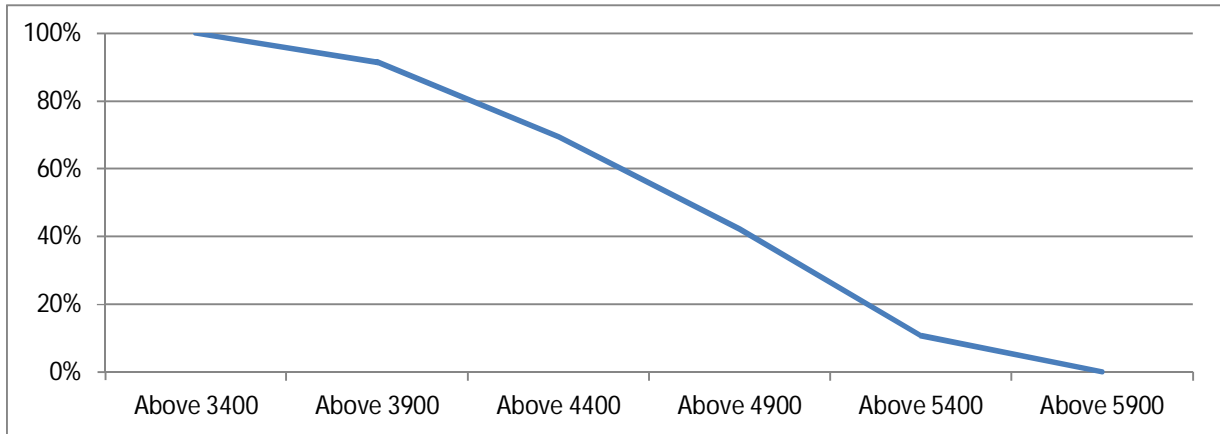
All figures in MW

| Hrs. | Demand | Load Shedding | Un-Restricted Demand |
|-----------------------|----------------|---------------|----------------------|
| 01:00 | 5206 | 0 | 5206 |
| 02:00 | 4917 | 0 | 4917 |
| 03:00 | 4718 | 0 | 4718 |
| 04:00 | 4507 | 0 | 4507 |
| 05:00 | 4331 | 0 | 4331 |
| 06:00 | 4160 | 0 | 4160 |
| 07:00 | 4100 | 0 | 4100 |
| 08:00 | 4215 | 0 | 4215 |
| 09:00 | 4381 | 0 | 4381 |
| 10:00 | 5021 | 0 | 5021 |
| 11:00 | 5352 | 0 | 5352 |
| 12:00 | 5435 | 0 | 5435 |
| 13:00 | 5469 | 0 | 5469 |
| 14:00 | 5501 | 0 | 5501 |
| 15:00 | 5647 | 0 | 5647 |
| 16:00 | 5559 | 0 | 5559 |
| 17:00 | 5319 | 0 | 5319 |
| 18:00 | 5176 | 0 | 5176 |
| 19:00 | 5089 | 7 | 5096 |
| 20:00 | 5333 | 0 | 5333 |
| 21:00 | 5384 | 0 | 5384 |
| 22:00 | 5702 | 0 | 5702 |
| 22.46.00 | 5937 | 0 | 5937 |
| 23:00 | 5890 | 0 | 5890 |
| 24:00 | 5695 | 0 | 5695 |
| Total (IN MUS) | 125.273 | 0.010 | 125.283 |



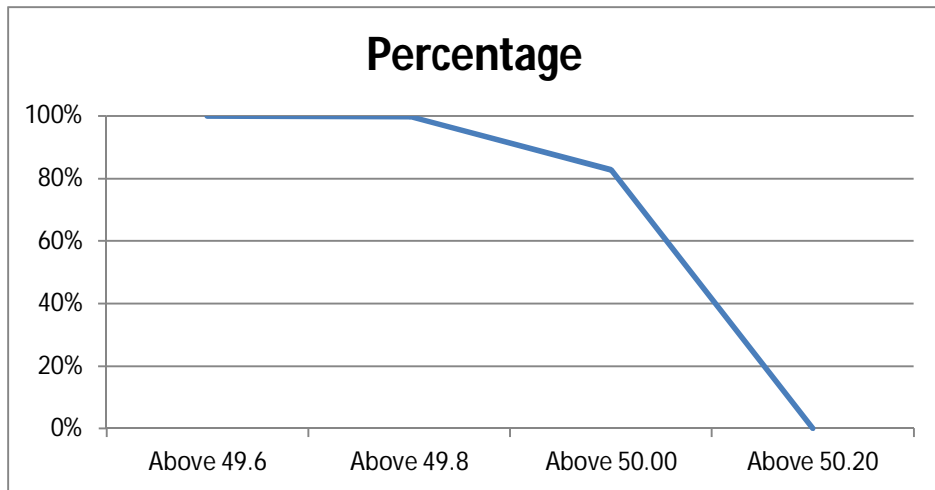
14 LOAD DURATION CURVE FOR AUG 2018

| Load in MW | Percentage of Time |
|------------|--------------------|
| Above 3400 | 100 |
| Above 3900 | 91.47 |
| Above 4400 | 69.39 |
| Above 4900 | 42.14 |
| Above 5400 | 10.72 |
| Above 5900 | 0.03 |



FREQUENCY ANALYSIS FOR THE MONTH OF AUG 2018

| Frequency Range in Hz. | Percentage of time |
|------------------------|--------------------|
| Above 49.6 | 100% |
| Above 49.8 | 99.89% |
| Above 50.00 | 82.79% |
| Above 50.20 | 0.00% |



16 VOLTAGE PROFILE OF 220 KV SUB-STATIONS IN DELHI DURING AUG 2018

All figures in kV

| Date | NARELA | | GAZIPUR | |
|-----------|--------|--------|---------|--------|
| | Max | Min | Max | Min |
| 01.Aug.18 | 229.3 | 217.05 | 232.4 | 217.82 |
| 02.Aug.18 | 227.63 | 216.02 | 229.95 | 217.7 |
| 03.Aug.18 | 227.63 | 217.7 | 228.92 | 218.86 |
| 04.Aug.18 | 227.37 | 216.53 | 230.85 | 214.47 |
| 05.Aug.18 | 228.01 | 217.18 | 230.46 | 220.15 |
| 06.Aug.18 | 231.49 | 220.4 | 230.46 | 219.76 |
| 07.Aug.18 | 231.88 | 220.92 | 230.72 | 219.11 |
| 08.Aug.18 | 232.4 | 220.79 | 231.11 | 218.86 |
| 09.Aug.18 | 231.49 | 218.86 | 230.85 | 215.63 |
| 10.Aug.18 | 227.5 | 218.98 | 225.3 | 215.24 |
| 11.Aug.18 | 229.43 | 218.6 | 230.08 | 216.53 |
| 12.Aug.18 | 230.85 | 220.4 | 231.37 | 217.18 |
| 13.Aug.18 | 229.95 | 219.11 | 229.17 | 216.53 |
| 14.Aug.18 | 230.08 | 218.21 | 228.53 | 215.63 |
| 15.Aug.18 | 231.11 | 219.11 | 232.4 | 217.82 |
| 16.Aug.18 | 228.53 | 218.86 | 229.17 | 215.63 |
| 17.Aug.18 | 228.92 | 217.05 | 227.37 | 210.73 |
| 18.Aug.18 | 227.88 | 218.47 | 227.88 | 213.18 |
| 19.Aug.18 | 229.43 | 219.24 | 227.88 | 217.05 |
| 20.Aug.18 | 229.95 | 219.63 | 229.17 | 213.83 |
| 21.Aug.18 | 229.3 | 217.7 | 227.5 | 212.15 |
| 22.Aug.18 | 227.37 | 219.5 | 225.95 | 215.76 |
| 23.Aug.18 | 231.24 | 220.27 | 229.3 | 217.31 |
| 24.Aug.18 | 231.37 | 219.89 | 229.95 | 216.92 |
| 25.Aug.18 | 230.72 | 220.79 | 229.82 | 218.34 |
| 26.Aug.18 | 231.88 | 219.63 | 230.59 | 216.53 |
| 27.Aug.18 | 230.59 | 219.5 | 230.46 | 216.41 |
| 28.Aug.18 | 230.59 | 218.34 | 230.72 | 216.02 |
| 29.Aug.18 | 231.49 | 221.44 | 230.08 | 219.89 |
| 30.Aug.18 | 230.85 | 216.66 | 230.21 | 216.41 |
| 31.Aug.18 | 229.17 | 219.5 | 228.27 | 217.18 |

17 VOLTAGE PROFILE OF 400 KV SUB-STATIONS IN DELHI DURING AUG 2018

All figures in kV

| Date | 400kV Bamnauli Grid Sub-Station | | | | |
|-----------|---------------------------------|----------|--------|----------|------------|
| | Max KV | Max Time | Min KV | Min Time | Average KV |
| 01.Aug.18 | 402.61 | 13:02:01 | 385.03 | 22:25:03 | 395.95 |
| 02.Aug.18 | 406.83 | 05:02:24 | 385.5 | 22:16:26 | 396.31 |
| 03.Aug.18 | 406.6 | 08:01:18 | 387.37 | 22:12:20 | 396.73 |
| 04.Aug.18 | 406.6 | 05:02:11 | 386.9 | 14:41:02 | 396.44 |
| 05.Aug.18 | 408.71 | 06:01:25 | 390.19 | 00:07:54 | 400.95 |
| 06.Aug.18 | 408.71 | 06:01:18 | 391.12 | 22:27:31 | 400.53 |
| 07.Aug.18 | 409.65 | 08:02:13 | 391.12 | 22:25:04 | 400.43 |
| 08.Aug.18 | 411.52 | 04:00:36 | 388.54 | 22:14:08 | 399.36 |
| 09.Aug.18 | 408.94 | 06:03:09 | 385.03 | 14:22:30 | 395.41 |
| 10.Aug.18 | 403.32 | 07:30:24 | 386.43 | 22:54:35 | 395.49 |
| 11.Aug.18 | 408.48 | 07:01:56 | 386.67 | 22:45:09 | 396.66 |
| 12.Aug.18 | 410.35 | 07:04:50 | 389.25 | 22:18:42 | 401.04 |
| 13.Aug.18 | 408.01 | 07:03:44 | 386.2 | 22:22:59 | 397.7 |
| 14.Aug.18 | 406.83 | 07:32:10 | 384.32 | 23:43:52 | 395.33 |
| 15.Aug.18 | 409.65 | 17:23:45 | 386.9 | 00:08:42 | 400.85 |
| 16.Aug.18 | 406.37 | 05:01:27 | 384.56 | 14:41:48 | 394.91 |
| 17.Aug.18 | 406.37 | 06:05:00 | 382.68 | 22:08:43 | 393.34 |
| 18.Aug.18 | 406.37 | 05:55:24 | 385.26 | 14:49:55 | 395.84 |
| 19.Aug.18 | 408.94 | 07:04:47 | 390.19 | 22:46:50 | 400.67 |
| 20.Aug.18 | 409.18 | 06:01:41 | 388.78 | 22:29:13 | 397.52 |
| 21.Aug.18 | 408.71 | 07:59:55 | 382.92 | 22:26:47 | 396.99 |
| 22.Aug.18 | 404.49 | 08:00:08 | 388.54 | 00:05:17 | 395.43 |
| 23.Aug.18 | 410.82 | 06:00:41 | 387.84 | 19:36:23 | 398.96 |
| 24.Aug.18 | 410.35 | 07:04:45 | 389.25 | 14:35:56 | 399.27 |
| 25.Aug.18 | 410.35 | 05:34:58 | 391.12 | 23:20:25 | 399.84 |
| 26.Aug.18 | 410.82 | 06:02:11 | 387.84 | 23:10:44 | 403.1 |
| 27.Aug.18 | 410.35 | 07:03:45 | 389.01 | 22:12:17 | 398.98 |
| 28.Aug.18 | 411.06 | 06:00:58 | 390.89 | 13:47:39 | 399.39 |
| 29.Aug.18 | 410.35 | 06:02:31 | 392.3 | 19:17:43 | 401.43 |
| 30.Aug.18 | 411.06 | 07:03:35 | 386.9 | 19:27:47 | 398.97 |
| 31.Aug.18 | 408.01 | 07:02:58 | 386.2 | 19:23:10 | 397.38 |

All figures in kV

| Date | 400kV Bawana Grid Sub-Station | | | | |
|-----------|-------------------------------|----------|--------|----------|------------|
| | Max KV | Max Time | Min KV | Min Time | Average KV |
| 01.Aug.18 | 412.7 | 06:01:12 | 392.76 | 22:21:24 | 403.23 |
| 02.Aug.18 | 410.82 | 06:02:21 | 393.94 | 22:22:45 | 401.87 |
| 03.Aug.18 | 411.29 | 08:01:21 | 395.58 | 23:16:34 | 403.14 |
| 04.Aug.18 | 409.88 | 06:02:29 | 394.88 | 14:39:26 | 402.42 |
| 05.Aug.18 | 412.7 | 16:31:47 | 396.99 | 00:07:14 | 406.23 |
| 06.Aug.18 | 414.34 | 07:06:08 | 400.74 | 19:40:09 | 407.12 |
| 07.Aug.18 | 416.21 | 08:01:58 | 399.57 | 22:24:50 | 407.78 |
| 08.Aug.18 | 417.15 | 04:00:35 | 398.63 | 22:14:19 | 406.65 |
| 09.Aug.18 | 415.51 | 06:02:45 | 388.78 | 14:36:22 | 403.7 |
| 10.Aug.18 | 408.48 | 06:01:45 | 396.28 | 14:23:12 | 402.19 |
| 11.Aug.18 | 413.63 | 07:03:05 | 396.99 | 22:45:10 | 404.06 |
| 12.Aug.18 | 415.04 | 07:05:57 | 398.63 | 19:40:57 | 407.14 |
| 13.Aug.18 | 413.17 | 07:08:26 | 395.81 | 22:22:39 | 404.16 |
| 14.Aug.18 | 411.99 | 07:31:26 | 393.47 | 23:36:29 | 402.09 |
| 15.Aug.18 | 415.04 | 17:03:43 | 394.64 | 00:08:39 | 406.55 |
| 16.Aug.18 | 411.06 | 06:01:14 | 393.7 | 14:37:31 | 401.33 |
| 17.Aug.18 | 410.82 | 06:04:03 | 391.59 | 22:10:52 | 400.5 |
| 18.Aug.18 | 409.65 | 05:55:32 | 393.7 | 00:08:28 | 402.4 |
| 19.Aug.18 | 413.63 | 07:03:53 | 397.92 | 22:45:45 | 406.39 |
| 20.Aug.18 | 412.46 | 06:06:51 | 396.99 | 14:44:49 | 403.09 |
| 21.Aug.18 | 412.23 | 08:01:52 | 393.23 | 22:27:14 | 402.78 |
| 22.Aug.18 | 408.48 | 17:27:39 | 396.05 | 00:22:25 | 401.72 |
| 23.Aug.18 | 415.51 | 07:36:51 | 216.43 | 15:09:16 | 406.22 |
| 24.Aug.18 | 416.21 | 07:08:19 | 396.75 | 19:17:59 | 405.84 |
| 25.Aug.18 | 413.63 | 05:34:57 | 399.1 | 23:07:41 | 405.66 |
| 26.Aug.18 | 414.81 | 07:02:47 | 398.16 | 23:10:40 | 408.75 |
| 27.Aug.18 | 413.63 | 07:59:48 | 396.05 | 22:23:49 | 404.08 |
| 28.Aug.18 | 413.87 | 06:01:25 | 398.39 | 00:39:41 | 404.53 |
| 29.Aug.18 | 414.34 | 06:02:24 | 398.16 | 19:17:35 | 406.23 |
| 30.Aug.18 | 413.63 | 07:03:34 | 394.88 | 19:25:54 | 404.16 |
| 31.Aug.18 | 411.06 | 07:03:23 | 393.47 | 19:23:03 | 402.37 |

18 DETAILS OF BREAK-DOWNS DURING THE MONTH OF AUGUST 2018

| SL NO | OCCURRENCE OF BREAK-DOWN | | DETAILS OF THE BREAKDOWN | TIME OF RESTORATION | | REMARKS |
|-------|--------------------------|-------|--|---------------------|-------|---|
| | DATE | TIME | | DATE | TIME | |
| 1 | 1.8.18 | 21:22 | ROHINI 220/66kV 100MVA Tx-I | 1.8.18 | 22:22 | 86 |
| 2 | 2.8.18 | 14:22 | 220kV MAHARANI BAGH - PRAGATI CKT | 2.8.18 | 15:54 | AT PRAGATI : DIST PROT, ZONE-I, DIST 12.64KM. AT MAHARANI BAGH : DIST PROT, ZONE-I, DIST 3.0KM. |
| 3 | 2.8.18 | 15:06 | PREETVIHAR 220/33kV 100MVA Tx-I | 2.8.18 | 18:55 | 86 |
| 4 | 4.8.18 | 06:40 | VASANT KUNJ 66kV 20MVAR CAP. BANK-II | 4.8.18 | 11:30 | 86, E/F. |
| 5 | 4.8.18 | 12:42 | 220kV MAHARANI BAGH - PRAGATI CKT | 4.8.18 | 13:40 | AT MAHARANI BAGH : DIST PROT, ZONE-I, DIST 2.9KM AT PRAGATI : DIST PROT, ZONE-I. DIST 5.54KM. |
| 6 | 4.8.18 | 19:17 | 220kV PRAGATI - SARITA VIHAR CKT - I | 4.8.18 | 19:52 | AT SARITA VIHAR : DIST PROT, ZONE-I, DIST 2.951 AT PRAGATI : DIST PROT, ZONE-I, DIST 9.474KM. |
| 7 | 5.8.18 | 06:55 | PAPPANKALAN-II 220/66kV 100MVA Tx-II | 5.8.18 | 07:35 | O/C, E/F. |
| 8 | 5.8.18 | 06:55 | PAPPANKALAN-II 220/66kV 160MVA Tx-III | 5.8.18 | 07:38 | O/C, E/F. |
| 9 | 5.8.18 | 06:55 | PAPPANKALAN-II 220/66kV 100MVA Tx-I | 5.8.18 | 07:37 | O/C, E/F. |
| 10 | 5.8.18 | 06:55 | PAPPANKALAN-II 220/66kV 160MVA Tx-IV | 5.8.18 | 07:27 | O/C, E/F. |
| 11 | 5.8.18 | 09:05 | PARKSTREET 33kV 10MVAR CAP. BANK-II | 5.8.18 | 11:40 | HOT POINT. |
| 12 | 6.8.18 | 04:45 | NARELA 66/33kV, 30MVA Tx | 6.8.18 | 18:26 | E/F. |
| 13 | 6.8.18 | 05:02 | SHALIMAR BAGH 33/11kV, 16MVA Tx-I | 6.8.18 | 07:50 | 86, BUCHHOLZ. |
| 14 | 7.8.18 | 10:35 | 220kV MEHRAULI - VASANT KUNJ CKT. - II | 7.8.18 | 12:56 | AT MEHRAULI : DIST PROT, ZONE-I, R PHASE, DIST 0.226KM. |
| 15 | 8.8.18 | 03:15 | GOPALPUR 220/33kV 100MVA Tx-III | 8.8.18 | 11:46 | 86, E/F. |
| 16 | 8.8.18 | 03:16 | SUBZI MANDI 220/33kV 100MVA Tx-I | 8.8.18 | 03:45 | 186 |
| 17 | 8.8.18 | 03:16 | SUBZI MANDI 220/33kV 100MVA Tx-II | 8.8.18 | 03:45 | 186 |
| 18 | 8.8.18 | 03:16 | 220kV GOPALPUR-SUBZI MANDI CKT-II | 8.8.18 | 03:45 | AT SUBZI MANDI : DIST PROT, ZONE-I, R PHASE, R PHASE CVT AVAILABLE. |
| 19 | 8.8.18 | 03:16 | 220kV GOPALPUR-SUBZI MANDI CKT-I | 8.8.18 | 03:45 | AT SUBZI MANDI : DIST PROT, ZONE-I, R PHASE, R PHASE CVT AVAILABLE. |
| 20 | 9.8.18 | 17:20 | 220kV MEHRAULI - BTPS CKT. - I | 9.8.18 | 20:55 | AT MEHRAULI : DIST PROT, ZONE-I, DIST 6.735KM. AT BTPS : DIST PROT, ZONE-I, DIST 15.9KM. |
| 21 | 10.8.18 | 14:51 | PARKSTREET 220/33kV 100MVA Tx-I | 14.8.18 | 23:54 | 86 A&B. |
| 22 | 11.8.18 | 09:41 | BAWANA 400/220kV 315MVA ICT-III | 11.8.18 | 11:32 | TRIPPED ON 86. |
| 23 | 11.8.18 | 16:33 | 220kV GAZIPUR - BTPS CKT | 11.8.18 | 19:05 | AT GAZIPUR : CKT DID NOT TRIPPED. AT BTPS : DIST PROT, ZONE-I, DIST 16KM. |
| 24 | 11.8.18 | 16:43 | 220kV GOPALPUR- MANDOLACKT-I | 11.8.18 | 17:43 | AT GOPALPUR : DIST PROT, 86. |
| 25 | 11.8.18 | 18:18 | NARELA 220/66kV 100MVA Tx-I | 11.8.18 | 20:12 | 186 |
| 26 | 12.8.18 | 08:50 | 220kV WAZIRABAD - MANDOLA CKT-IV | 12.8.18 | 15:22 | AT WAZIRABAD : DIST PROT, ZONE-I, DIST 6.439KM. |
| 27 | 12.8.18 | 10:05 | OKHLA 220/66kV 100MVA Tx-I | 12.8.18 | 11:55 | 195 |
| 28 | 12.8.18 | 10:32 | GEETA COLONY 33kV GEETA COLONY CKT-I | 12.8.18 | 12:40 | HOT POINT. |
| 29 | 12.8.18 | 10:35 | NARELA 66/33kV, 30MVA Tx | 12.8.18 | 14:55 | GEN MTC. |
| 30 | 12.8.18 | 17:40 | 220kV GOPALPUR- MANDOLACKT-I | 12.8.18 | 18:20 | AT GOPALPUR : DIST PROT, ZONE-I, DIST 12.30KM. AT MANDOLA : DIST PROT. |
| 31 | 13.8.18 | 20:10 | 220kV SARITA VIHAR - BTPS CKT.-I | 14.8.18 | 10:57 | AT SARITA VIHAR : WITHOUT INDICATION. |

| SL NO | OCCURRENCE OF BREAK-DOWN | | DETAILS OF THE BREAKDOWN | TIME OF RESTORATION | | REMARKS |
|-------|--------------------------|-------|--|---------------------|-------|--|
| | DATE | TIME | | DATE | TIME | |
| 32 | 14.8.18 | 11:10 | 220 KV GOPALPUR-WAZIRABAD CKT-2 | 14.8.18 | 11:57 | AT WAZIRABAD : DIST PROT, ZONE-I, DIST 1.603KM. |
| 33 | 14.8.18 | 12:57 | KASHMIRI GATE 33/11kV, 16MVA Tx | 15.8.18 | 01:00 | O/C, 86. |
| 34 | 14.8.18 | 13:23 | 220KV GOPALPUR-SUBZI MANDI CKT-I | 14.8.18 | 13:58 | AT GOPALPUR : DIST PROT ZONE-I. |
| 35 | 14.8.18 | 16:30 | PAPPANKALAN-I 66/11kV, 20MVA Tx-III | 14.8.18 | 17:15 | 86 |
| 36 | 14.8.18 | 19:30 | 220KV MAHARANI BAGH - SARITA VIHAR CKT | 14.8.18 | 20:16 | AT SARITA VIHAR : DIST PROT, ZONE-I, DIST 1.986KM. AT MAHARANI BAGH : DIST PROT, ZONE-I |
| 37 | 15.8.18 | 09:32 | 220KV GOPALPUR-SUBZI MANDI CKT-II | 15.8.18 | 09:54 | AT GOPALPUR : DIST PROT,ZONE-I, DIST 5.886KM. |
| 38 | 15.8.18 | 10:05 | 220KV PRAGATI - SARITA VIHAR CKT - I | 15.8.18 | 10:47 | AT PRAGATI : DIST PROT, ZONE-III, DIST 12.37KM. AT SARITA VIHAR : DIST PROT, ZONE-I, DIST 2.439KM. |
| 39 | 15.8.18 | 12:59 | 220KV PRAGATI - SARITA VIHAR CKT - I | 15.8.18 | 14:50 | AT PRAGATI : DIST PROT, ZONE-II, DIST 10.79. AT SARITA VIHAR : DIST PROT,ZONE-I, DIST 2.116KM. |
| 40 | 15.8.18 | 13:13 | 220KV GOPALPUR- MANDOLACKT-I | 15.8.18 | 14:26 | AT GOPALPUR : DIST PROT, DIST 39.28KM, LINE DIFFERENTIAL. |
| 41 | 15.8.18 | 16:10 | 220KV WAZIRABAD - MANDOLA CKT-I | 15.8.18 | 17:00 | AT WAZIRABAD : DIST PROT, ZONE-I, DIST .9KM. |
| 42 | 15.8.18 | 16:41 | 220KVBAWANA- ROHINI CKT-I | 15.8.18 | 18:03 | AT BAWANA : DIST PROT, ZONE-I, DIST 3.5KM. |
| 43 | 15.8.18 | 16:57 | 220KV GOPALPUR- MANDOLACKT-II | 15.8.18 | 17:40 | AT GOPALPUR : DIST PROT, ZONE-I, DIST 1.671KM. AT MANDOLA : DIST PROT, ZONE-I, DIST 0.21KM. |
| 44 | 15.8.18 | 17:04 | 220KV GAZIPUR - MAHARANIBAGH CKT. -I | 15.8.18 | 18:03 | AT MAHARANI BAGH : DIST PROT, ZONE-I, DIST 0.4KM. |
| 45 | 15.8.18 | 18:07 | 220KV PRAGATI - SARITA VIHAR CKT - I | 15.8.18 | 18:20 | AT PRAGATI : DIST PROT, ZONE-I, DIST 6.693KM AT SARITA VIHAR : DIST PROT, ZONE-I, DIST 5.88KM. |
| 46 | 16.8.18 | 13:10 | PAPPANKALAN-II 220/66kV 100MVA Tx-II | 16.8.18 | 17:40 | MASTER RELAY. |
| 47 | 17.8.18 | 12:28 | GEETA COLONY 220/33kV 100MVA Tx-I | 17.8.18 | 21:16 | ABC PHASE, AUTO TRIP. |
| 48 | 18.8.18 | 13:02 | 220KV ROHINI-SHALIMARBAGH CKT-II | 18.8.18 | 13:42 | AT SHALIMARBAGH : DIST PROT, 86ABC. |
| 49 | 18.8.18 | 16:06 | 220KV WAZIRABAD-GEETA COLONY CKT-II | 19.8.18 | 00:10 | AT GEETA COLONY : DIST PROT, ZONE-I, DIST 0.5KM. AT WAZIRABAD : DIST PROT, ZONE-I, DIST 5.596KM. |
| 50 | 18.8.18 | 16:40 | GEETA COLONY 220/33kV 100MVA Tx-II | 18.8.18 | 20:06 | E/F. |
| 51 | 19.8.18 | 04:03 | 220KV ROHINI-SHALIMARBAGH CKT-I | 19.8.18 | 08:38 | AT ROHINI -I : 186A&B. |
| 52 | 21.8.18 | 13:03 | 220KV MEHRAULI - BTPS CKT. - II | 21.8.18 | 14:18 | AT MEHRAULI : DIST PROT, ZONE-I, DIST 7.16KM. AT BTPS : DIST PROT, ZONE-I, DIST 14.1KM. |
| 53 | 23.8.18 | 08:42 | 400kV Bawana-Mundka Ckt-II | 23.8.18 | 13:07 | AT BAWANA : DIST PROT, ZONE-I, DIST 6.18KM. AT MANDOLA : DIST PROT, DIST 15.77KM. |
| 54 | 23.8.18 | 09:22 | GAZIPUR 66/11kV, 20MVA Tx-I | 23.8.18 | 11:25 | 86 |
| 55 | 23.8.18 | 12:04 | 220KV BAWANA-SHALIMARBAGH CKT-II | 23.8.18 | 14:35 | AT SHALIMARBAGH : DIST PROT. AT BAWANA : DIST PROT, DIST 9.44KM. |

| SL NO | OCCURRENCE OF BREAK-DOWN | | DETAILS OF THE BREAKDOWN | TIME OF RESTORATION | | REMARKS |
|-------|--------------------------|-------|--|---------------------|-------|---|
| | DATE | TIME | | DATE | TIME | |
| 56 | 25.8.18 | 03:45 | OKHLA 66/11kV, 20MVA Tx-II | 25.8.18 | 09:20 | O/C |
| 57 | 26.8.18 | 03:19 | 220KV PAPPANKALAN-I-NARAINA CKT-I | 26.8.18 | 05:40 | AT NARAINA : DIST PROT, ZONE-III, O/, 86. |
| 58 | 26.8.18 | 09:22 | WAZIRABAD 66/11kV, 20MVA Tx-III | 26.8.18 | 20:23 | DIFFERENTIAL RELAY. |
| 59 | 28.8.18 | 05:40 | 220KV GEETA COLONY- PATPARGANJ CKT -II | 28.8.18 | 09:30 | AT PATPARGANJ : HOT POINT. |
| 60 | 28.8.18 | 08:58 | 220KV MEHRAULI - VASANT KUNJ CKT.- II | 28.8.18 | 14:35 | AT MEHRAULI : DIST PROT, ZONE-I, DIST 613MTS. AT VASANT KUNJ : CKT. DID NOT TRIP. |
| 61 | 28.8.18 | 06:46 | KANJHAWALA 66/11kV, 20MVA Tx-II | 30.8.18 | 12:25 | BUCHOLLZ. |
| 62 | 28.8.18 | 12:36 | 220KV MEHRAULI - BTPS CKT. - II | 28.8.18 | 16:11 | AT MEHRAULI : DIST PROT, ZONE-I, DIST 13.93KM, E/F. |
| 63 | 29.8.18 | 08:47 | MEHRAULI 66kV PALAM CKT | 29.8.18 | 11:55 | Palam tripped on Z-1, RYB phase, 0.1KM |
| 64 | 29.8.18 | 10:25 | MEHRAULI 66kV CDOT CKT-I | 29.8.18 | 11:54 | AT MEHRAULI:66KV C-DOT 1 TRIPPED ON 186 E/F. |
| 65 | 29.8.18 | 12:21 | 220KV MUNDKA-KANJHAWALA CKT | 29.8.18 | 14:05 | AT MUNDAKA: ZONE-1, ZONE-2, ZONE-3, 86A&B, 10.58KM |
| 66 | 29.8.18 | 23:00 | OKHLA 220/33kV 100MVA Tx-III | 30.8.18 | 02:10 | O/C |
| 67 | 29.8.18 | 23:00 | OKHLA 220/33kV 100MVA Tx-V | 30.8.18 | 02:10 | E/F, 86. |
| 68 | 29.8.18 | 23:00 | OKHLA 33kV NEHRU PLACE CKT-I | 30.8.18 | 08:15 | AT OKHLA: TRIPPED ON O/C, 67CS. |
| 69 | 29.8.18 | 23:00 | OKHLA 220/33kV 100MVA Tx-IV | 30.8.18 | 02:10 | 86 |
| 70 | 30.8.18 | 05:45 | 220KV MAHARANI BAGH - SARITA VIHAR CKT | 30.8.18 | 06:21 | RYB PHASE. |
| 71 | 30.8.18 | 05:45 | 220KV MAHARANI BAGH - SARITA VIHAR CKT | 30.8.18 | 06:21 | AT MAHARANIBAGH: TRIPPED ON RYB PHASE, O/C. |
| 72 | 30.8.18 | 06:30 | SARITA VIHAR 66kV DMRC CKT-I | 30.8.18 | 12:45 | AT SARITA VIHAR: FOR REPAIRING B PHASE CT CABLE. |
| 73 | 30.8.18 | 10:55 | 220KVBAWANA- ROHINI CKT-II | 30.8.18 | 12:10 | AT BAWANA : DIST PROT, DIST 8.22KM. |

19 DETAILS OF UNDER FREQUENCY RELAY OPERATIONS IN DELHI POWER SYSTEM DURING THE MONTH OF AUGUST 2018

| DATE | S. N. | TIME | | Name of Grid | NAME OF AFFECTED FEEDERS | MODE | LOAD RELIEF IN MW |
|------|-------|------|----|--------------|--------------------------|------|-------------------|
| | | OUT | IN | | | | |
| | | | | | | | |
| | | | | NIL | | | |
| | | | | | | | |
| | | | | | | | |